



*Dreamgirl*<sup>®</sup>

2023 Collection



STYLE 12899

Dear Dreamgirl Customer,

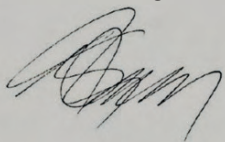
I look at 2023 as a unique window of opportunity and growth. A renaissance period that has emerged from the last couple of years laden with an ongoing health crisis, rising inflation, culture shifts and other global effects. 2023 marks a new cycle for Dreamgirl, full of promise, a blank slate, a refresh. At every beginning of the year, there's a natural reinvention that happens. And this re-emergence heightens the sense of the beginning of something else. What that something looks like is up to interpretation. Dreamgirl took this opportunity to define this moment. To thrive on renewal, presenting a new collection that lands differently as we adjust to the ever-shifting world.

In our 2023 Collection, you will see how we've refreshed the line, Dreamgirl's evolution and growth. You will see it in our up-to-date silhouettes, be pleasantly surprised by our diversified offerings to include more trend driven innovative items for all shapes and sizes for the ever-changing woman, and compelling details to speak to this unique moment. The outlook toward lingerie going from being a necessity to a fashion product will be a major factor dictating the demand for fashionable and trendy lingerie. Pretty and feminine details will still be driving interest. After seasons of "pandemic underwear," women are missing more elaborate boudoir items, including sensual underwired lingerie and full sets inclusive of other accessories.

Accompanying this inspiring new collection is the separate but equally exciting bodystocking and hosiery catalog with all of the key looks and styles for 2023. I hope you find this new collection chic, sophisticated, and memorable and brings you much to celebrate in the New Year.

Sincerely,

Barry Revzen  
CEO, Dreamgirl International



<b>Hanging Lingerie</b>	<b>4</b>
<b>Robes</b>	<b>65</b>
<b>Sleep and Lounge</b>	<b>72</b>
<b>Bridal</b>	<b>80</b>
<b>Packaged Lingerie</b>	<b>94</b>
<b>Red Diamond</b>	<b>94</b>
<b>White Diamond</b>	<b>120</b>
<b>Bedroom Costumes</b>	<b>130</b>
<b>Fetish</b>	<b>148</b>
<b>Panties and Garter Belts</b>	<b>162</b>



New



**12899, 12899X**

S, M, L, XL, 1X, 2X, 3X  
Black/Pink

- 3-piece floral embroidery set with bra, garter belt and G-string
- Gold hardware, bows, and picot edge elastic
- Underwire lace bra, ruffle skirt garter belt, and matching floral embroidery G-string
- Shown with Style 0192/X thigh highs; sold separately





- Floral embroidery babydoll and matching G-string set
- Triangle soft cups, soft mesh skirt, draped back and cut out sides
- Adjustable picot edge shoulder straps and adjustable back with swan hook and slider

**12898**

S, M, L, XL  
Black/Pink



New



**12783, 12783X**

S, M, L, XL, 1X, 2X, 3X  
Pink/Black



- Diamond stretch mesh garter slip and G-string set
- Eyelash lace trim, delicate satin bows, underwire cups with elastic ric-rac trim, and a garter-shaped hem with ruffled lace
- Adjustable hook & eye back closure, adjustable shoulder straps, and attached/adjustable garters
- Shown with Style 0192/X thigh highs; sold separately
- Gloves not included



- Diamond stretch mesh cropped bustier and G-string set
- Eyelash lace trim, ruffled lace hem, delicate bow details, underwire cups, and a fully-boned bodice
- Front-closure underwire cups, front hook & eye bodice opening, and adjustable ruffled lace shoulder straps

**12784**

S, M, L, XL  
Pink/Black





STYLE 12782





- Lace smocking camisole and thong set
- Ruffled mesh elastic trims, satin bow accents, and a cap sleeve detail

**12782**

S, M, L, XL

Mint



New



**12781**

S, M, L, XL  
Mint

- Lace smocking garter slip and G-string set featuring ruffled elastic trim and a garter-shaped hem
- Adjustable satin elastic cord shoulder ties, adjustable hook & eye back closure, and attached/adjustable garters
- Shown with Style 0192 thigh highs; sold separately





- Satin and lace bralette and short set
- Lace insert details on front and back
- Criss-cross adjustable shoulder straps



**12901**

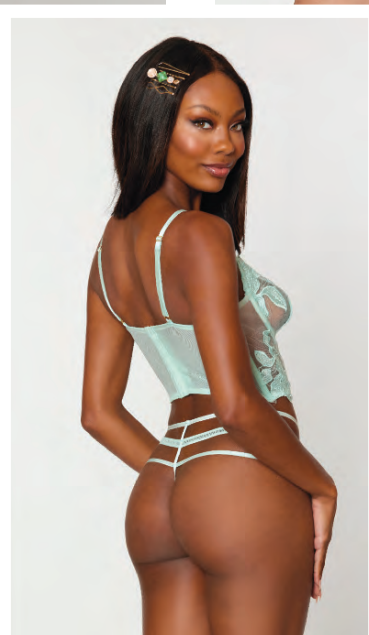
S, M, L, XL  
Mint





STYLE 12897

*New*



- Embroidery and mesh long-line bra and G-string set
- Large-scale floral embroidery, sheer underwire cups, rhinestone pendant, and criss-cross front detail
- Matching strappy G-string

**12897, 12897X**

S, M, L, XL, 1X, 2X, 3X

Mint





STYLE 12895, 12895X

*New*



- 3D embroidery mesh babydoll and G-string set
- 3D floral embroidery triangle cups, handkerchief hem skirt, and matching 3D floral embroidery G-string
- Adjustable shoulder straps and front hook closure

**12895, 12895X**

S, M, L, XL, 1X, 2X, 3X  
Periwinkle



New



**12896**

S, M, L, XL  
Periwinkle



- 3D floral embroidery mesh bralette and garter panty set
- 3D floral embroidery halter neck bralette with keyhole front detail and tie closure
- High-waisted garter panty with solid and 3D floral embroidery mesh, criss-cross detail open back, and removable/adjustable garters
- Shown with Style 0192 thigh highs; sold separately





- Light satin camisole and panty set
- Flowy cropped camisole with adjustable straps and tie back closure
- Matching panty with adjustable side straps
- Knee socks not included

**12902**

S, M, L, XL  
Periwinkle





**10532**  
S, M, L, XL  
Sky Blue

- Silky satin charmeuse bias cut halter chemise with eyelash lace trim
- Low back with T-strap
- Adjustable straps



**12386**  
S, M, L, XL  
Pink Champagne

- Stretch lace and stretch mesh babydoll set with triple gold ring accent and matching G-string
- Stretch satin underwire, foam lined cups with lace overlay detail
- Stretch mesh skirt with lace trim hem
- Adjustable shoulder straps with hook & eye back closure





- Sheer mesh ruched garter slip with front boning and matching G-string
- Removable/adjustable shoulder straps, removable/adjustable garter straps, and hook & eye back closure
- Shown with Style 0007 thigh highs; sold separately

**12432**  
S, M, L, XL  
Rose Pink



- 3-piece stretch satin strappy bra, garter belt and thong set with O-ring strappy front details and molded, push-up underwire cups
- Adjustable shoulder straps, adjustable hook & eye back closures, and adjustable garter straps
- Shown with Style 0007 thigh highs; sold separately

**12435**  
S, M, L, XL  
Rose Pink





STYLEs 12890, 12897X, 12775, 12902

*New*



- Eyelash lace lingerie shrug and matching panty set
- Shrug with wide, open sides, cap sleeve detail, ruffled elastic neckline trim, and adjustable front tie mesh closure
- Matching panty with adjustable side tie mesh closures
- Gloves and body jewelry not included

**12775, 12775X**  
S, M, L, XL, 1X, 2X, 3X  
Aubergine



New



**12776**  
S, M, L, XL  
Aubergine

- Eyelash lace bralette and slip skirt set
- Triangle, soft cup bralette with adjustable hook & eye back closure and adjustable satin rattail shoulder ties
- Matching lace, midi-length slip skirt with satin-covered button back closure
- G-string and gloves not included



*New*



- Scalloped-edge fishnet stretch lace band teddy featuring keyhole details and thong back with snap crotch
- Slightly-padded underwire satin cups with adjustable shoulder straps and hook & eye back closure
- Gloves not included

**12771, 12771X**

S, M, L, XL, 1X, 2X, 3X  
Aubergine/Black





**11815**  
S, M, L, XL  
Eggplant

- Lace romper with eyelash lace trim
- Adjustable halter straps
- Open back with adjustable ribbon tie closure
- Flirty, high-cut leg with snap crotch

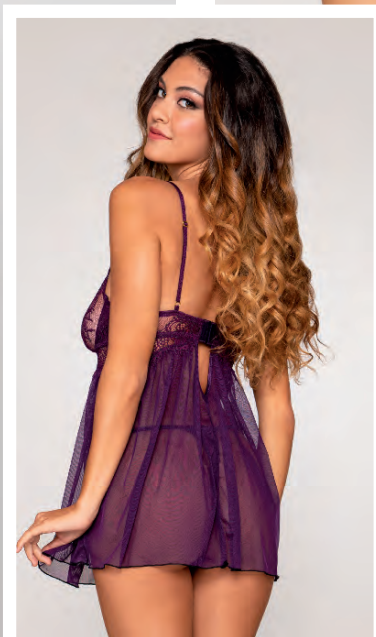


**12468**  
S, M, L, XL  
Plum

- Eyelash lace garter teddy with black cording accents
- Underwire cups with strappy neckline, gold ring details, attached high waist garter panty and thong back with snap crotch
- Adjustable shoulder straps with hook & eye back closure, adjustable hook & loop back waist closure and attached/adjustable garters
- Shown with Style 0007 thigh highs; sold separately







- Eyelash lace and stretch mesh babydoll and thong set with black cording accents
- Underwire cups with strappy neckline and gold ring details
- Adjustable shoulder straps with hook & eye back closure

**12467, 12467X**

S, M, L, XL, 1X, 2X, 3X

Plum





STYLE 12770



*New*

- Stretch fishnet bra and slip skirt set
- Underwire halter bra with adjustable hook & eye back closures and large, exposed metal "V" wire detail
- Matching midi-length slip skirt with 2-way gold metal zipper
- G-string and gloves not included

**12770, 12770X**

S, M, L, XL, 1X, 2X, 3X

Black



New



12764

S, M, L, XL  
Black



- Stretch lace and fishnet garter slip and G-string set
- Architectural shaped cups with boning support and large, exposed metal "V" wire detail
- Adjustable shoulder straps with matching "V" hardware detail, adjustable hook & eye back closure, adjustable back waist elastic, and removable/adjustable garters
- Shown with Style 0338 thigh highs; sold separately



- Stretch lace and fishnet garter teddy
- Architectural shaped cups with boning support and large, exposed metal "V" wire detail
- Adjustable shoulder straps with matching "V" hardware detail, adjustable hook & eye back closure, adjustable back waist elastic, and removable/adjustable garters
- Shown with Style 0338 thigh highs; sold separately
- Gloves not included

**12765**

S, M, L, XL  
Black



*New*



**12886**

S, M, L, XL  
Black



- Stretch lace garter slip with strappy details and bold silver front zipper
- Underwire eyelash lace cup with cage details
- Adjustable shoulder straps and attached garters
- Shown with Style 0001 thigh highs; sold separately
- G-string not included



- Scalloped stretch lace garter teddy with zig-zag elastic detail
- Underwire cups with adjustable shoulder straps and hook & eye back closure, attached zig-zag elastic collar with hook & eye back neck, and zig-zag elastic thong with snap crotch attached at side seams
- Attached/adjustable garters
- Shown with Style 0007/X thigh highs; sold separately

**12462, 12462X**

S, M, L, XL, 1X, 2X, 3X

Black





STYLE 12890





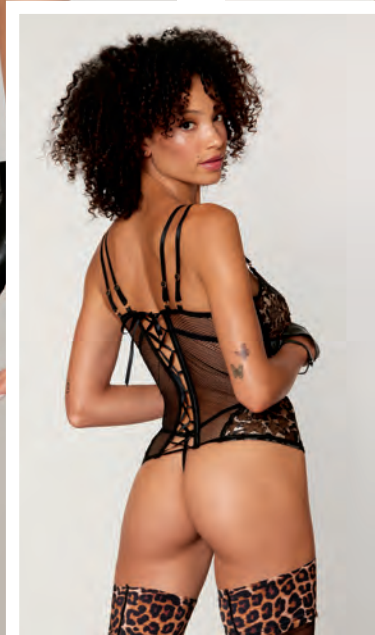
- Allover leopard lace and fishnet open-back teddy with strappy details and fancy gold hardware
- Underwire cups with shiny satin and leopard lace combination
- Adjustable/attached garters and adjustable hook & eye back closures
- Shown with Style 0432 thigh highs; sold separately

**12890**

S, M, L, XL  
Black/Animal



New



**12889, 12889X**

S, M, L, XL, 1X, 2X, 3X  
Black/Animal

- Allover leopard lace and fishnet bustier and matching G-string set
- Boned bodice with fishnet inserts, satin seaming details, adjustable double shoulder straps, and lace-up back
- Underwire cups with shiny satin and leopard lace combination, fancy gold hardware, strappy details
- Shown with Style 0432/0432X thigh highs; sold separately





- Flocked cheetah print mesh garter slip and G-string set with O-ring strappy front detail
- Adjustable, criss-cross double shoulder straps, adjustable hook & eye keyhole back, and attached/adjustable garter straps
- Shown with Style 0007 thigh highs; sold separately

**12428**  
S, M, L, XL  
Eggplant



- Flocked animal print mesh teddy with studded trim details
- Foam lined underwire cups, thong back with snap crotch, and adjustable shoulder straps with hook & eye back closure
- Plus garment has been modified with additional shoulder strap support

**12422, 12422X**  
S, M, L, XL, 1X, 2X, 3X  
Black





STYLE 12762



- 3-piece leopard stretch mesh and fishnet bra, garter skirt, and G-string set with fancy picot elastic trims and square gold hardware accents
- Long line bra with boning support, adjustable shoulder straps and adjustable hook & eye back closure
- Matching garter skirt with waist corset boning detail, adjustable hook & eye back closure and removable/adjustable garters
- Shown with Style 0338 thigh highs; sold separately

**12762**

S, M, L, XL  
Nocturnal



New



**12763, 12763X**

S, M, L, XL, 1X, 2X, 3X  
Nocturnal



- Leopard stretch mesh and fishnet garter teddy with fancy picot elastic trims and square gold hardware accents
- Underwire cups with adjustable shoulder straps and hook & eye back closure
- Attached waist corset detail with boning support, adjustable hook & eye back closure and removable/adjustable garters
- Thong back with snap crotch
- Shown with Style 0338/0192X thigh highs; sold separately
- Harness not included



- Satin, animal jacquard, bias-cut chemise
- Eyelash lace trim with faggoting detail
- Double, criss-cross adjustable shoulder straps



*New*

**12785**

S, M, L, XL  
Nocturnal





**12426, 12426X**

S, M, L, XL, 1X, 2X, 3X  
Nocturnal

- Contemporary lace and mesh garter slip with matching G-string
- Cap sleeves, plunging neckline with exposed underwire detail, and open back with hook & eye closure
- Removable/adjustable garter straps
- Shown with Style 0007/0001X thigh highs; sold separately







- Fishnet and lace fly-away front babydoll and G-string set
- Plunge bra neckline, molded lined underwire cups, and wide scalloped lace under-bust detail
- Adjustable double shoulder straps and hook & eye keyhole back closure
- Matching lace double strap G-string



**12430**

S, M, L, XL  
Nocturnal



- Fishnet and lace bra and G-string set
- Plunge bra neckline, molded lined underwire cup, wide scalloped lace under-bust detail
- Adjustable double shoulder straps and hook & eye back closure
- Matching double strap panty with G-string back

**12431**

S, M, L, XL  
Nocturnal





**10102**

S, M, L, XL  
Midnight, Mulberry



**10102X**

1X, 2X, 3X  
Mulberry



- Delicate, draped fringe chemise and matching mesh G-string
- Halter T-back with adjustable straps



- Stretch spandex mesh and draped fringe halter teddy
- Elastic strappy back detail and halter neck tie closure
- Snap crotch

**8603**

S, M, L, XL  
Garnet



- Satin cowl neck teddy with stretch mesh back, high cut leg, and thong back with snap crotch
- Snag-free, removable rhinestone straps
- Clear removable shoulder straps included

**12693**

S, M, L, XL  
Burgundy



New



**12768**

S, M, L, XL  
Burgundy



- Novelty stretch mesh and delicate venise embroidery garter slip and G-string set
- Triangle, soft cups with adjustable halter T-back strap
- Garter shaped hem with attached/adjustable garters
- Shown with Style 0192 thigh highs; sold separately
- Gloves not included

*New*



- Novelty stretch mesh and delicate venise embroidery babydoll and matching G-string set
- Triangle, soft cups with adjustable halter T-back strap
- Fly-away, open back skirt

**12769, 12769X**

S, M, L, XL, 1X, 2X, 3X  
Burgundy



New

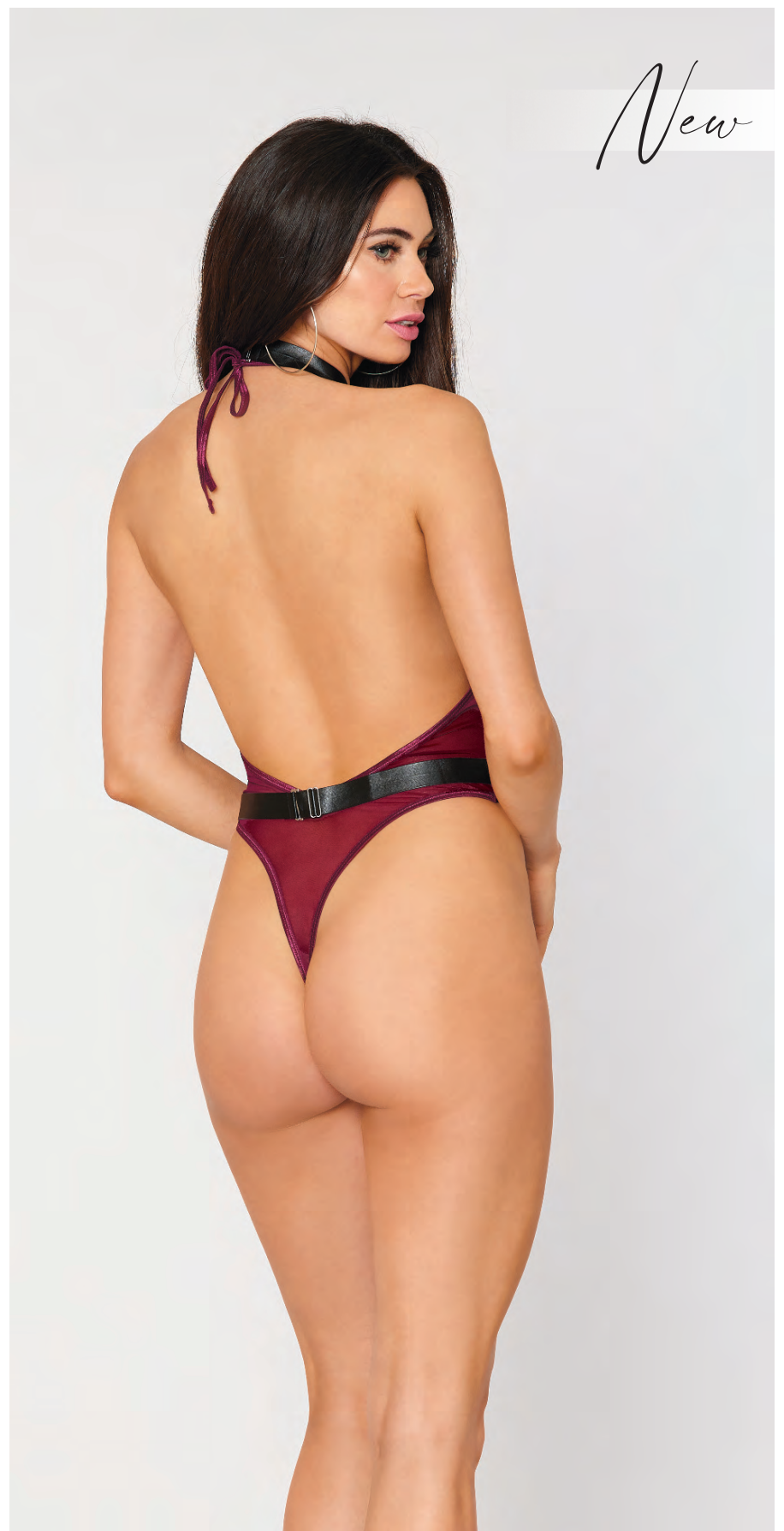


**12774**

S, M, L, XL  
Burgundy

- Geometric venise embroidery cropped bustier and matching thong set
- Fully boned bodice with satin seaming details, stretch mesh back with adjustable hook & eye closure, and adjustable mesh straps
- Thong with stretch mesh back





- Soft stretch mesh teddy and faux-leather harness set
- Halter neck teddy with thong back and neck tie closure
- Faux leather harness with adjustable back and bulky silver hardware
- Gloves not included

**12963**

S, M, L, XL  
Burgundy/Black





STYLE 12887



*New*



- Stretch faux-leather and eyelash lace bra and garter panty set
- Bra features functional zipper in the front, boning for support, eyelash lace, and adjustable shoulder straps
- High waisted panty with functional front zipper, removable/adjustable garters and stretch eyelash lace
- Shown with Style 0001/X thigh highs; sold separately
- Gloves not included

**12887, 12887X**

S, M, L, XL, 1X, 2X, 3X

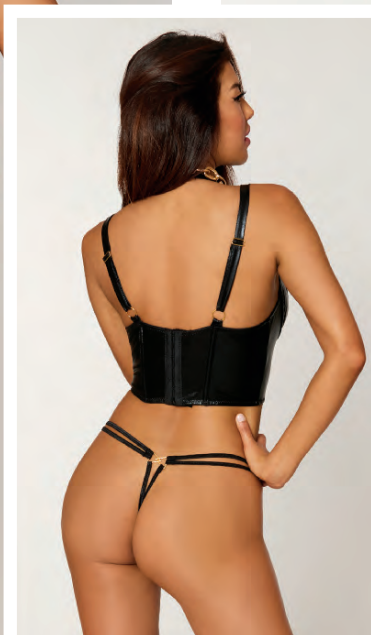
Black





STYLE 12761

*New*



- Stretch faux-leather and textured stretch mesh cropped bustier and strappy G-string set with geometric gold hardware accents
- Underwire, double layer cups with adjustable shoulder and halter straps
- Bodice has keyhole details, support boning and adjustable hook & eye back closure
- Gloves not included

**12761, 12761X**

S, M, L, XL, 1X, 2X, 3X

Black



New



STYLE 12883

**12883**

S, M, L, XL  
Black

- Fishnet and stretch faux-leather open-cup bustier and mesh G-string set with attached/adjustable garters
- Decorative silver hook & eye front closure, lace-up back closure, long sleeves with finger loops, and functional hook & eye neck closure
- Stockings and pasties not included





- Fishnet and stretch faux-leather garter slip
- High turtle neck, long sleeves with finger loop, bold silver back zipper, and attached/adjustable garters
- Stocking and pasties not included

**12882, 12882X**

S, M, L, XL, 1X, 2X, 3X

Black





**12174**  
S, M, L, XL  
Black



- Double-layer stretch lace teddy and faux leather garter slip one-piece
- Underwire cup support, snap crotch and front zipper detail
- Adjustable, double shoulder straps with hook & eye back closure and attached/adjustable garters
- Lace teddy is connected to garter slip on side seams
- Shown with Style 0007 thigh highs; sold separately

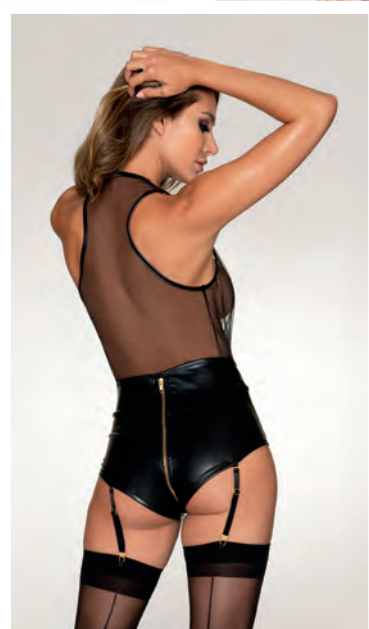


**12456**  
S, M, L, XL  
Black



- Stretch faux leather halter teddy with elastic cording lace-up details and gold metal grommets
- Adjustable neck ties
- Open crotch and thong back



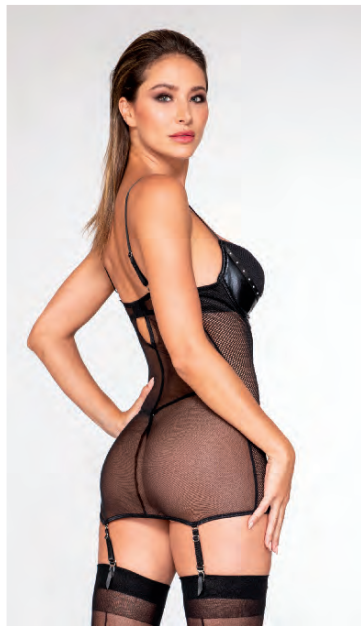


- Mesh and faux-leather garter teddy
- Plunging neckline and functional front-to-back zipper
- Removable/adjustable garter straps
- Shown with Style 0007/X thigh highs; sold separately

**12425, 12425X**

S, M, L, XL, 1X, 2X, 3X  
Black





**12424, 12424X**

S, M, L, XL, 1X, 2X, 3X  
Black

- Fishnet and faux-leather garter slip and G-string set with decorative lace-up front, metal stud details
- Underwire, molded push-up cups
- Adjustable shoulder straps with hook & eye back closure and removable/adjustable garter straps
- Shown with Style 0007/X thigh highs; sold separately



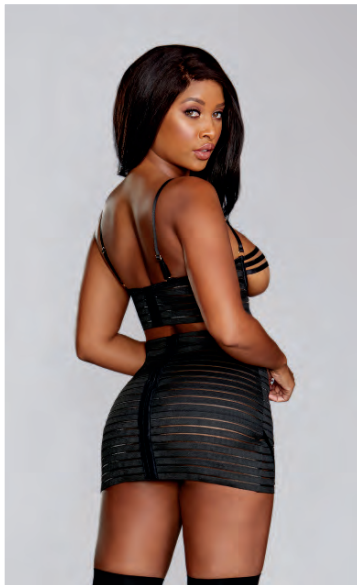




- Strappy elastic underwire, open cup bra and garter skirt set with gold rings and hardware
- Adjustable straps across open bra cups, hook & eye back closure
- Elastic strappy garter skirt with ring details, hook & eye back closure, and front garters
- Shown with Style 0007 thigh highs; sold separately

**12159**

S, M, L, XL  
Black



- 3-piece sheer striped elastic set with strappy underwire bra, garter belt, and thong
- Shiny gold decorative rings and hardware, removeable collar and neck straps, hook & eye back closures, and adjustable straps
- Shown with Style 0338 thigh highs; sold separately
- Gloves and hat not included

**12160**

S, M, L, XL  
Black



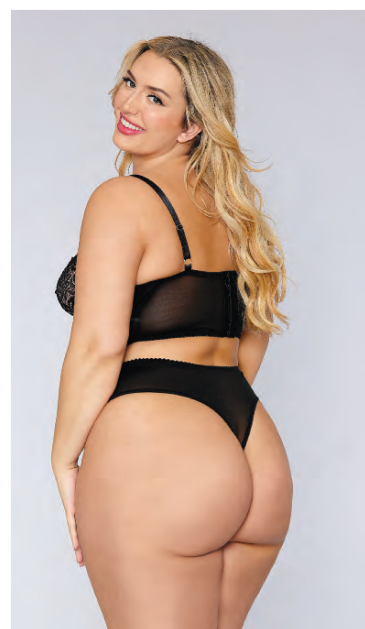


**12651**

S, M, L, XL  
Black

- Black rhinestone stretch fishnet halter teddy with eyelash lace trim details
- Hook & eye back neck closure, adjustable back elastic strap
- Lace thong back
- Hat and gloves not included





- Stretch mesh and stretch galloon lace underwire bustier and lace-up thong set
- Lace-up detail with sheer mesh backing, silver grommets and rings
- Bustier features front boning, adjustable shoulder straps, and hook & eye back closure
- Plus garment has been modified with higher waist and more side and back coverage

**12163, 12163X**

S, M, L, XL, 1X, 2X, 3X

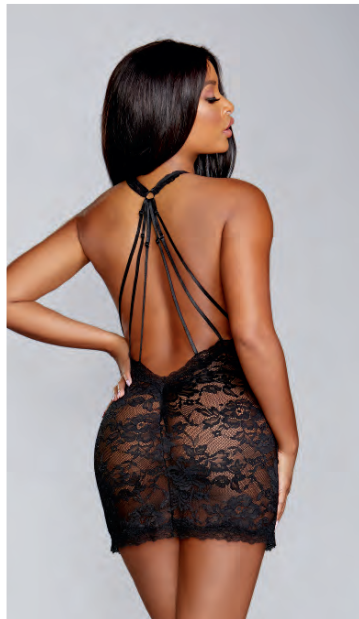
Black





**12243**  
S, M, L, XL  
Black

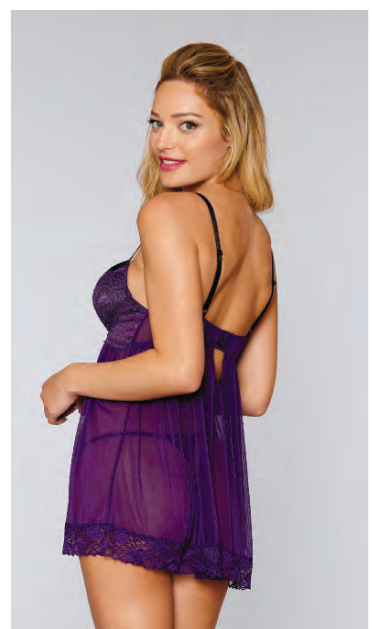
- Stretch lace halter chemise and G-string set with scalloped edge lace
- Plunging strappy neckline and adjustable back strapping detail



**11025**  
XS, S, M, L, XL  
Black, Lipstick Red



- Eyelash lace halter teddy
- High tie-neck closure, eyelash lace framing, low back, and snap crotch



- Stretch mesh and lace babydoll with matching G-string
- Underwire push-up cups with adjustable straps and hook & eye back closure
- Stretch satin with lace overlay detail
- Plus garment has been modified by removing the push-up cups

**11020, 11020X**

S, M, L, XL, 1X, 2X, 3X  
Plum, Ruby





**10460, 10460X**

S, M, L, XL, 1X, 2X, 3X  
Garnet

- Lace halter gown with matching G-string
- Plunging neckline, high side slit, low back, scalloped-edge trim, and satin waist detail
- Adjustable tie-back closures



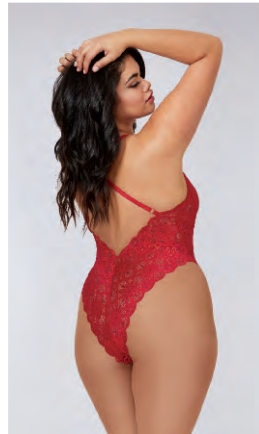


- Eyelash lace and stretch mesh babydoll with matching mesh G-string
- Rhinestone-studded elastic strappy neckline and foam-lined underwire lace cups
- Stretch mesh skirt with lace trim hem
- Adjustable shoulder straps with hook & eye back closure

**12378, 12378X**

S, M, L, XL, 1X, 2X, 3X  
Eggplant, Garnet





## 10996, 10996X

S, M, L, XL, 1X, 2X, 3X

Black, Rouge, Vintage Rose

- Mosaic stretch lace teddy with sheer mesh tie-front maxi skirt
- Open G-string back
- Adjustable criss-cross straps
- Plus garment has been modified with a higher neckline and full lace back for additional coverage







- Charmeuse kimono robe and matching chemise set
- Robe features attached belt
- Chemise features adjustable criss-cross straps, low back, and tie back closure
- Matching padded lingerie hanger included

**3717, 3717X**

S, M, L, 1X/2X, 3X/4X  
Black, Red





STYLES 12789, 12897



- 3-piece satin robe, bralette, and panty set with eyelash lace trims
- Robe with wide sleeve detail and attached belt
- Bralette with adjustable shoulder straps and hook & loop closure
- Panty with soft elastic waist and high-cut leg

**12789**

S, M, L, XL  
Nocturnal



*New*



**12788, 12788X**

S, M, L, XL, 1X, 2X, 3X  
Burgundy

- Eyelash lace robe with wide border pattern on scallop hem
- Satin banding details and attached belt closure
- G-string not included



*New*



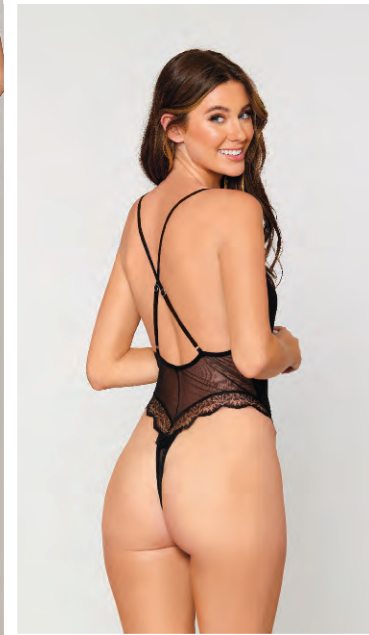
- Eyelash lace chemise with wide border pattern on scallop hem
- Double layer satin cup with double, adjustable criss-cross shoulder straps
- Matching satin G-string included

**12787, 12787X**

S, M, L, XL, 1X, 2X, 3X  
Burgundy



New



**12652, 12652X**

S, M, L, XL, 1X, 2X, 3X  
Black

- Stretch mesh teddy and robe set with lace trim details
- Teddy features adjustable criss-cross shoulder straps and thong back
- Robe comes with matching belt
- Body jewelry not included





- 3-piece stretch mesh chemise, robe, and G-string set with scalloped lace trims
- U-back with back hook closure
- Adjustable straps

**12239, 12239X**

S, M, L, XL, 1X, 2X, 3X  
Black, Plum, Rouge





STYLE 12793





- Rib knit sleepwear bralette and thong set with ruffled lace elastic trims
- Long-line bralette with hook & eye front detail
- Knee socks not included

**12793**

S, M, L, XL

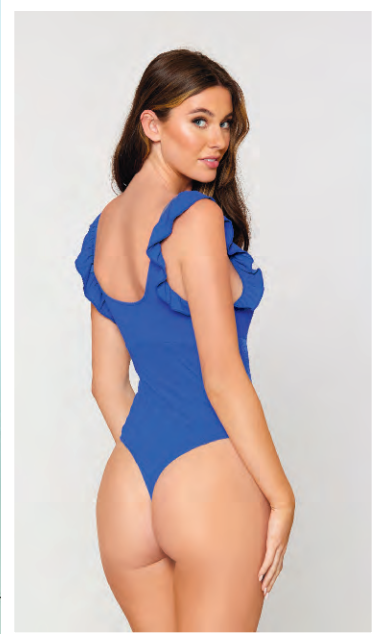
Mint



New



New



**12962, 12962X**  
S, M, L, XL, 1X, 2X, 3X  
Periwinkle

- Rib knit sleepwear teddy with ruffled sleeve detail
- Elastic-supported underbust seam, bodice style line details
- Thong back with snap crotch
- Knee socks not included





*New*

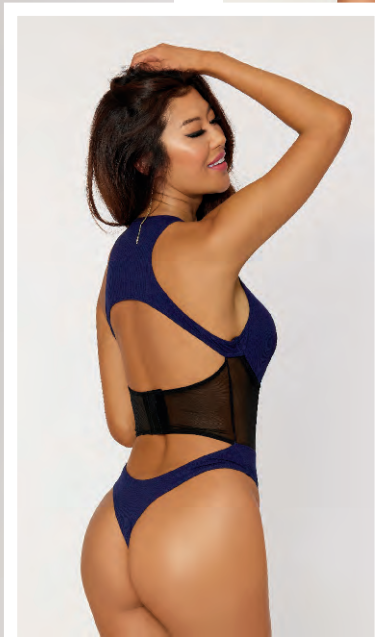
- Rib knit sleepwear chemise with ruffled lace elastic trims
- Front hook & eye opening detail
- Hook & eye can be worn in the front or the back

**12792**

S, M, L, XL  
Periwinkle



New



**12798, 12798X**  
S, M, L, XL, 1X, 2X, 3X  
Nocturnal/Black

- Rib knit sleepwear teddy with high neck and racer-back styling detail
- Attached, fully boned mesh waist corset detail with underwire support and adjustable hook & eye back closure
- Open back detail
- Thong back with snap crotch
- Knee socks not included





- Soft rib-knit jersey two-piece sleepwear pajama set
- Camisole with lace straps and side ruching detail
- Matching cozy wide leg pant with lace detail at waist and hem

**12480**

S, M, L, XL  
Nocturnal



- Soft rib-knit jersey sleepwear romper
- Lace straps, side ruching detail, and lettuce edge hem

**12482**

S, M, L, XL  
Eggplant



New



**12790, 12790X**  
S, M, L, XL, 1X, 2X, 3X  
Burgundy

- Rib knit sleepwear chemise with lace inset details
- Self-bias, adjustable criss-cross shoulder straps





- Rib-knit sleepwear bralette and short set with lace inset details
- Long-line bralette with self-bias, adjustable shoulder straps
- Matching high-waisted short with soft waistband and lace side details
- Shown with Style 0417 shrug; sold separately
- Knee socks not included

**12791**

S, M, L, XL  
Burgundy





STYLE 12904





- Floral lace garter teddy with asymmetrical strappy details
- Underwire lace cups with elastic picot edge trims
- Sheer mesh draping with gold buckle
- Removable/adjustable garters and adjustable hook and eye back closure
- Shown with Style 0338/0001X thigh highs; sold separately

**12904, 12904X**

S, M, L, XL, 1X, 2X, 3X  
White



*New*



**12906**

S, M, L, XL  
White



- Lace and diamond mesh garter slip and G-string set with silver hardware
- Deep plunging neckline with removable pearl and chain rosary style trim and stretch diamond mesh skirt with heart lace trim on the edge
- Swan hook closure on the back and fixed garters with satin ribbon clip covers
- Shown with Style 0001 thigh highs; sold separately
- Gloves and veil not included



*New*



- Diamond stretch mesh and scalloped stretch lace cropped bustier and G-string set
- Bodice features boning support, underwire lace cups with pearl chain trim detail, adjustable hook & eye back closure, and adjustable lace shoulder straps
- Matching G-string with pearl chain trim and criss-cross back elastic details
- Veil not included

**12799**

S, M, L, XL  
White



*New*



**12907, 12907X**  
S, M, L, XL, 1X, 2X, 3X  
White

- Satin and eyelash lace babydoll and matching G-string set
- Eyelash lace triangle cups with satin ribbon shoulder ties
- Soft satin skirt with satin covered buttons closure on the front



*New*



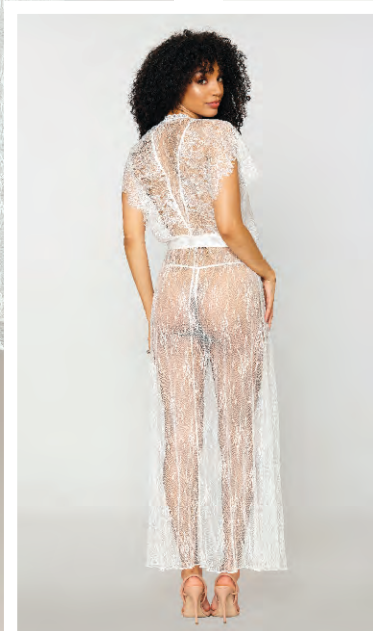
- Satin and eyelash lace trim bridal robe with artistic floral screen-print on the back
- Attached satin belt

**12909, 12909X**

S, M, L, XL, 1X, 2X, 3X  
White



New



Styles 12802,  
9386, 8735 and 0338

**12802**

S, M, L, XL  
White

- Lace gown and G-string set with wide eyelash lace
- Open sides, cap sleeve bodice
- Satin, adjustable tie-front opening



*New*



- Stretch mesh robe and bonded stretch lace teddy set
- Robe features wide flounce sleeve detail and attached belt
- Teddy features adjustable criss-cross shoulder straps and thong back with snap crotch

**12803, 12803X**

S, M, L, XL, 1X, 2X, 3X  
White





**12437, 12437X**

S, M, L, XL, 1X, 2X, 3X  
White

- 3-piece lace and mesh bra, garter belt and panty set
- Bra features exposed underwire cup, cap sleeve, and adjustable hook & eye back closure
- Removable/adjustable garter straps
- Keyhole back panty with satin bow detail
- Shown with Style 0007/0005X thigh highs; sold separately







- Lace and mesh babydoll and G-string set
- Exposed underwire cup detail, cap sleeve
- Adjustable hook & eye back closure

**12436,12436X**

S, M, L, XL, 1X, 2X, 3X  
White



- Stretch lace cropped bustier and thong set
- Embroidered heart lace appliqué details, boning support, and removable/adjustable shoulder straps with hook & eye back closure
- Matching thong with heart lace appliqué and G-string back

**12479**

S, M, L, XL  
White





**12186, 12186X**

S, M, L, XL, 1X, 2X, 3X  
White

- Eyelash lace babydoll and matching strappy G-string set
- Underwire, balconette bra with boning support
- Adjustable shoulder straps with hook & eye back closure
- Plus garment has been modified with additional cup strap support



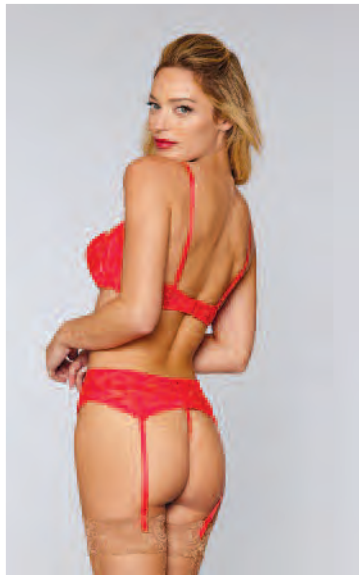


- Delicate embroidery halter teddy with gold ring details
- Wide, adjustable tulle straps, criss-crossing the back, and wrap-to-front large bow detail
- Open, low back with thong and snap crotch

**12189, 12189X**

S, M, L, XL, 1X, 2X, 3X  
White



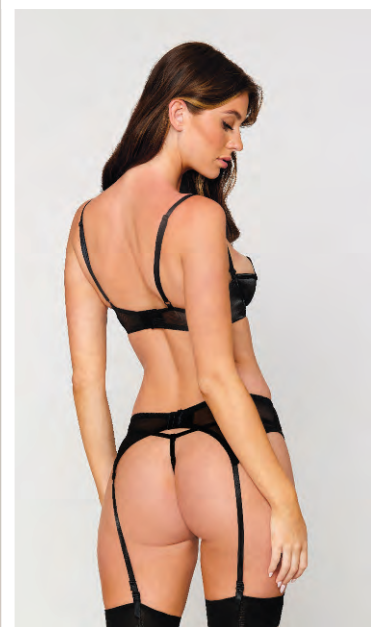


## 9386, 9386X

32, 34, 36, 38, 40, 42, 44  
Black, Red, White

- Stretch lace open-cup underwire shelf bra
- Adjustable shoulder straps and hook & eye back closure
- Shown with Styles 8735/X garter belt and 0338/0005X thigh highs; sold separately
- Pasties and G-string not included





- Stretch lace, open-cup underwire shelf bra with vinyl "X" design, adjustable shoulder straps, and hook & eye back closure
- Shown with Style 9382 garter belt; sold separately
- Pasties, stockings and G-string not included

**9384**

32, 34, 36, 38  
Black



- Satin open-cup underwire shelf bra with zig-zag topstitch detailing, stretch mesh back
- Adjustable shoulder straps and hook & eye back closure
- Shown with Styles 9382 garter belt and 0338 thigh highs; sold separately
- Pasties and G-string not included

**9385**

32, 34, 36, 38  
Black



# DIAMOND



STYLES 12811 and 12805



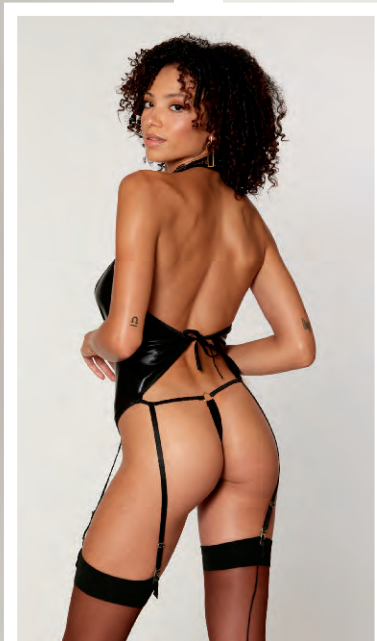
- 3-piece stretch fishnet bralette, garter belt, and G-string set with black chain details
- Halter bralette has chain & keyhole detail with hook & loop halter closure and adjustable elastic band
- Garter belt has chain front garters and adjustable elastic back waistband
- Matching G-string with chain detail
- Stockings not included

12811

O/S  
Black



*New*



**12806, 12806X**

O/S, O/S Queen  
Black

- Faux-leather and stretch lace garter teddy with gold ring details
- Halter neck with ring detail and hook & eye neck closure, plunging neckline with adjustable back waist tie
- Lace open crotch, thong back with ring detail
- Attached/adjustable garters
- Shown with style 0338 thigh highs; sold separately







- Two-layer stretch fishnet garter slip with faux-vinyl inside teddy
- Halter, underwire, two-layer cups, adjustable tie-back closures
- Garter shaped hem with attached/adjustable garters
- Teddy has G-string back
- Stockings not included

**12804, 12804X**

O/S, O/S Queen  
Black



*New*

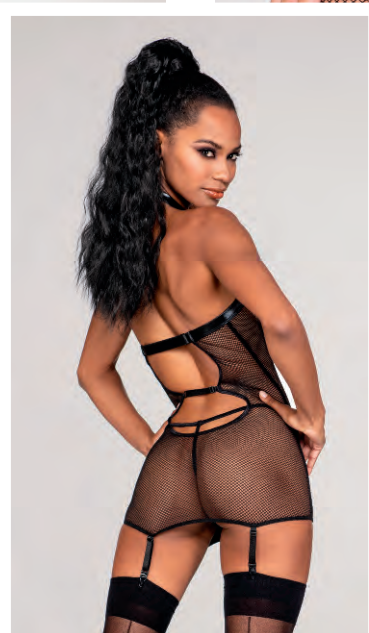


**12805**

O/S  
Black

- Shiny, coated stretch knit halter teddy with black chain details
- Plunging neckline with draping chains, hook & eye back neck closure and adjustable tie back cups
- Adjustable waist elastic with draping chains
- Open crotch, G-string back





- Stretch faux-leather and fishnet garter slip with matching G-string
- Criss-cross halter neckline with hook & eye back closure, adjustable back straps, and front zipper detail
- Attached/adjustable garters
- Shown with Style 0007/X thigh highs; sold separately

**12447, 12447X**

O/S, O/S Queen  
Black



New



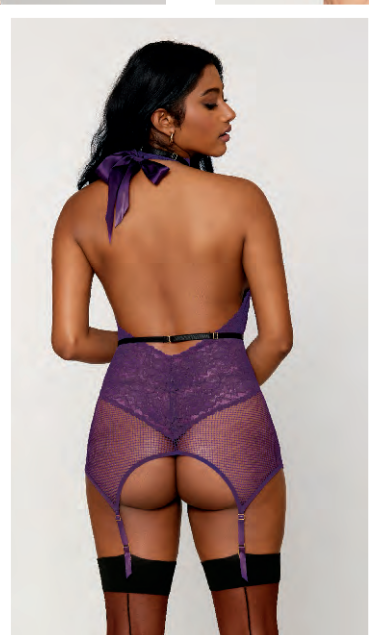
**12808**

O/S  
Aubergine

- 2-piece seamless leopard fishnet bralette and garter skirt set
- Bralette with keyhole neckline and attached long sleeve gloves with built-in fingers
- Matching garter skirt with keyhole back detail and attached garters
- G-string not included
- Shown with Style 0001 thigh highs; sold separately



*New*



- 3-piece lace and fishnet garter slip, elastic harness and matching G-string set
- High halter neckline with tie-neck closure and low back
- Satin finishing elastic harness
- Shown with Style 0338/0192X thigh highs; sold separately

**12923, 12923X**

O/S, O/S Queen  
Aubergine





**11517, 11517X**

O/S, O/S Queen  
Plum



- Stretch mesh chemise with shirring details and matching mesh G-string
- Halter neckline with adjustable T-back strap
- Front zipper detail



**12485**

O/S  
Plum



- Stretch lace bralette and thong set with contrast strappy elastic details, delicate draping gold chains, and gold ring accents
- Halter bralette with tie back closures, and center "V" wire detail



- Stretch galloon lace teddy with peek-a-boo cutouts
- Unlined triangle cups with criss-cross adjustable shoulder straps
- Open crotch and G-string back

**10551**  
O/S  
Garnet, Mulberry



- Contemporary lace and mesh chemise with matching G-string
- Adjustable halter neck closure and center front O-ring detail
- Keyhole opening in back and adjustable elastic back straps

**12446, 12446X**  
O/S , O/S Queen  
Mulberry



New



**12910**

O/S  
Nocturnal



- Textured mesh and lace babydoll and matching lace G-string set
- Gold pendant and hardware
- Soft triangle cup with lace and textured mesh, picot elastic and keyhole detail
- Adjustable shoulder straps

**12125**

O/S  
Nocturnal

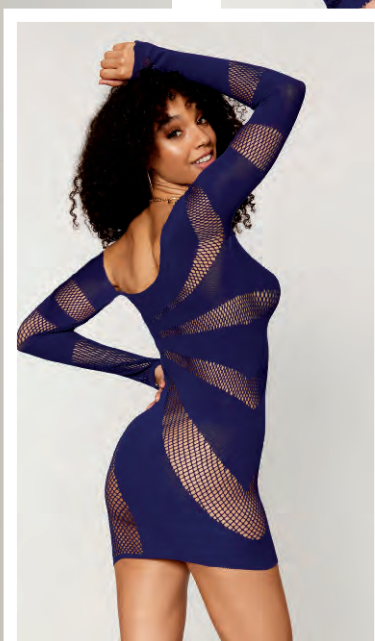


- Stretch scalloped lace and stretch fishnet collared merriwidow with matching G-string
- Stretch velvet elastic details
- Ribbon tie neck closure and back keyhole detail with waist adjustment
- Attached garters
- Shown with Style 0007 thigh highs; sold separately





*New*



- Seamless long-sleeve chemise with asymmetrical neckline
- Open fishnet and opaque stripes combination
- G-string not included

**12922, 12922X**

O/S, O/S Queen  
Nocturnal



*New*



**12809, 12809X**

O/S, O/S Queen  
Burgundy

- Seamless zebra fishnet teddy and glove set
- High neck, front and back criss-cross detail, and adjustable shoulder straps
- Cheeky back fit
- Matching zebra fishnet, opera length gloves with knitted fingers
- G-string not included



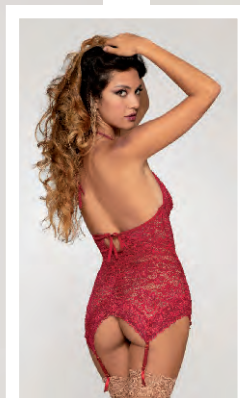
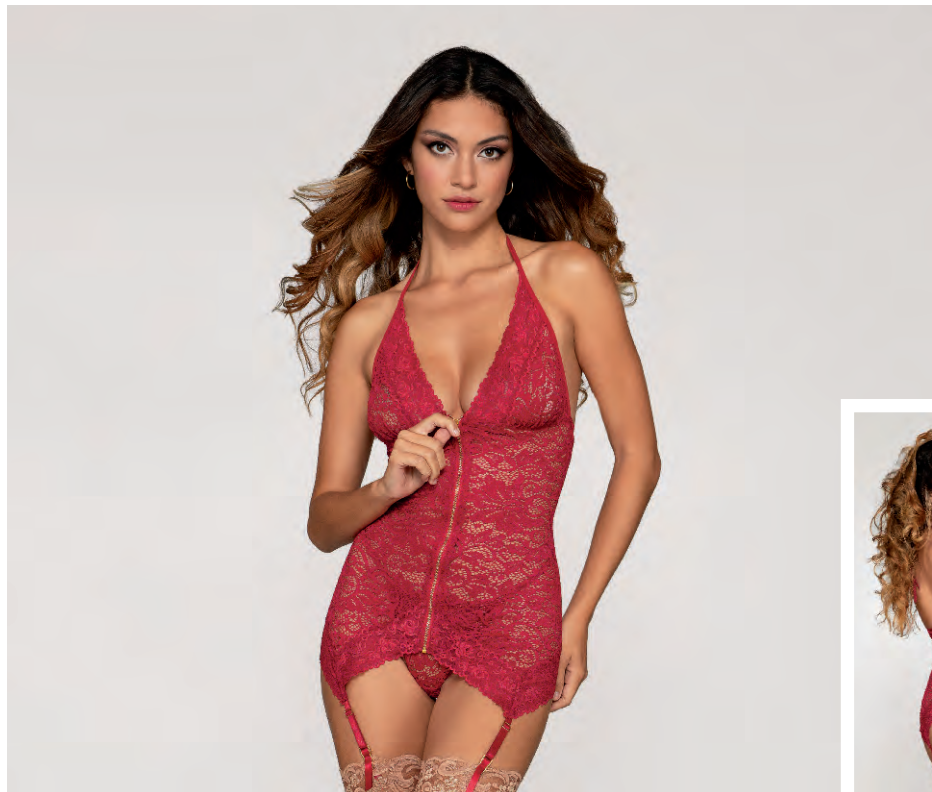


- 3-piece skimpy bralette, waist belt and G-string set
- Open triangle cup with fancy appliqué
- Halter neck, satin tie on the back
- Mesh waist belt with ties on the back
- Mesh and appliqué G-string

12926

O/S  
Burgundy

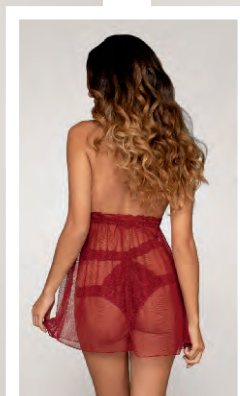




**12488, 12488X**

O/S, O/S Queen  
Garnet

- Stretch lace garter slip with matching G-string
- Center front zipper detail, adjustable halter neck, and back tie closure
- Fixed, adjustable garter straps
- Shown with Style 0001/0007X thigh highs; sold separately



**11503, 11503X**

O/S, O/S Queen  
Garnet

- Stretch lace and mesh babydoll with matching strappy stretch lace panty
- Halter neck styling with key hole detail and tie back closure





- 4-piece fishnet and lace bralette, garter belt, G-string and choker set with stretch velvet trim accents
- Halter bralette with adjustable back closures
- Garter belt with attached/adjustable garters and adjustable waistband
- Matching fishnet G-string and velvet choker necklace
- Shown with Style 0001/0007X thigh highs; sold separately

**11776, 11776X**

O/S, O/S Queen  
Garnet, Rose Pink



New



12927

O/S  
Periwinkle

- Leopard stretch mesh and zigzag elastic lingerie shrug and panty set
- Plunging neckline shrug with front tie closure, long sleeves, and lace trim finishing
- Cheeky bikini panty with functional side tie closures





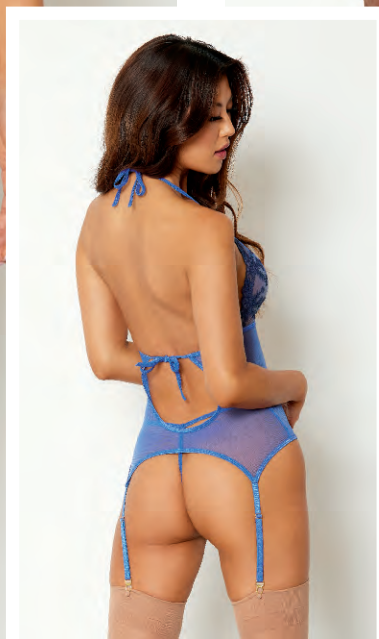
- Sheer lace babydoll and thong set
- Double-layer triangle soft cup with stretch lace trims and adjustable shoulder straps
- Fly-away back
- Matching thong with functional side ties

12928

O/S  
Periwinkle



*New*



**12957, 12957X**

O/S, O/S Queen  
Periwinkle

- Floral embroidery and mesh bustier and G-string set with gold hardware and delicate bow details
- Soft triangle cup with halter neck tie closure and adjustable tie back closure
- Garter-shaped hem and attached/adjustable garters
- Shown with Style 0007/X thigh highs; sold separately





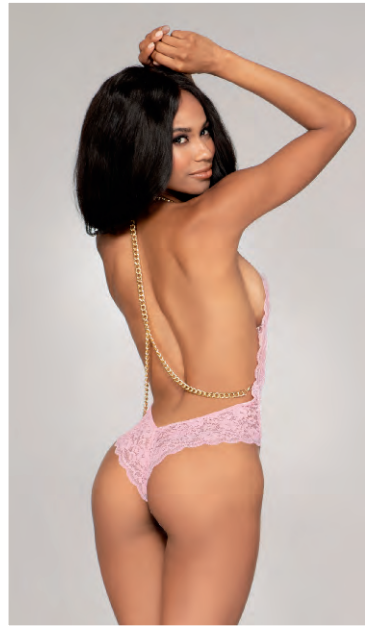
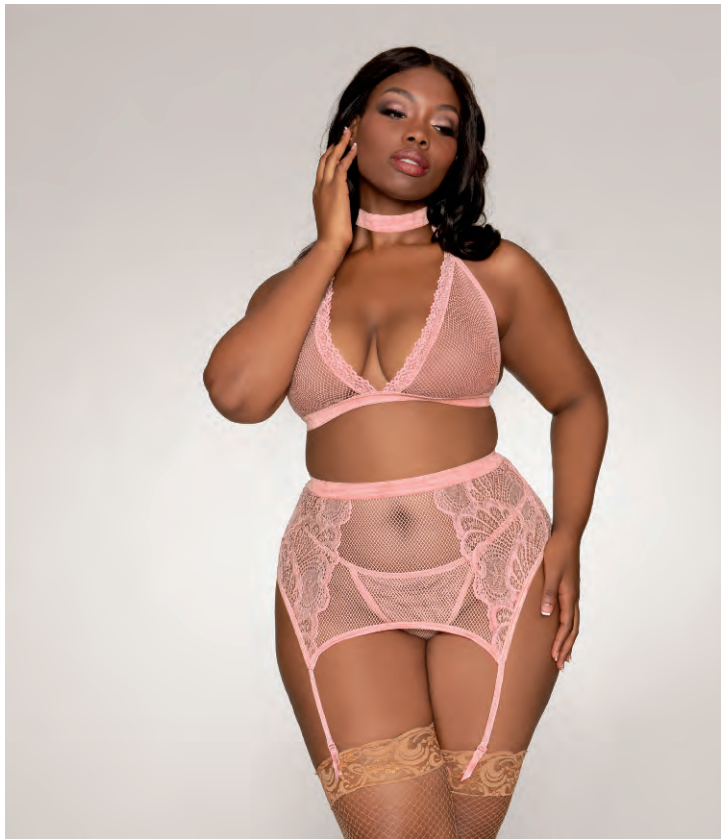
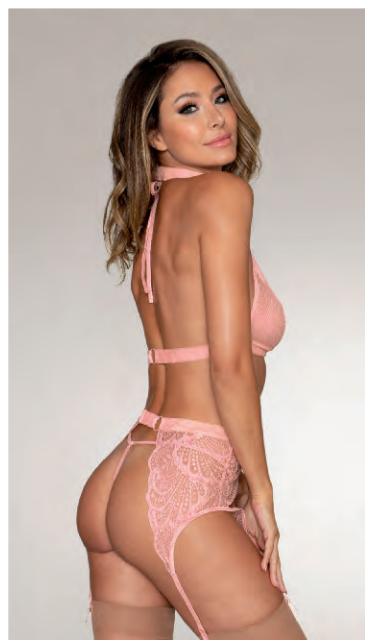


- Textured mesh and stretch lace garter slip and matching lace G-string set
- Soft triangle cups with lace and textured mesh, picot elastic trim and keyhole details
- Adjustable shoulder straps, fixed garters
- Shown with Style 0001 thigh highs; sold separately

12924

O/S  
Ballet Pink





## 11776, 11776X

O/S, O/S Queen  
Garnet, Rose Pink



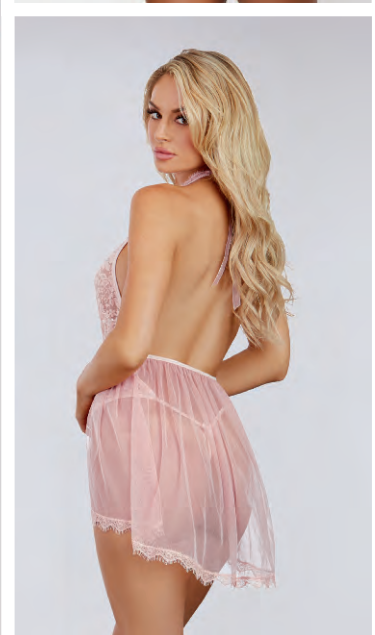
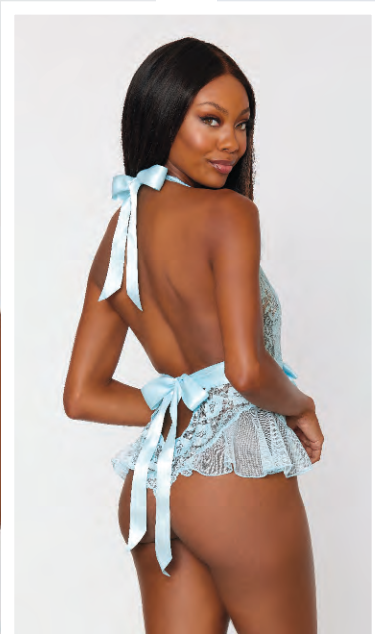
- 4-piece fishnet and lace bralette, garter belt, G-string and choker set with stretch velvet trim accents
- Halter bralette with adjustable back closures, garter belt with attached/adjustable garters and adjustable waistband, matching fishnet G-string and velvet choker necklace
- Shown with Style 0007/0001X thigh highs; sold separately

## 12483

O/S  
Rose Pink



- Stretch lace halter teddy with chain accents
- Adjustable chain collar with T-back draping detail
- Chains are all removable



- Stretch, scalloped galloon lace teddy with plunging halter neckline
- Fluttery chiffon ruffles at hip
- Peek-a-boo back and open crotch
- Tie neck closure and satin tie-back bow at waist

**10583**

O/S

Light Blue, White



- Halter plunge front stretch lace teddy with eyelash lace trim and attached fly-a-way hi-lo skirt
- Organza ribbon tie at neck
- G-string back

**11513,11513X**

O/S, O/S Queen  
Pink Champagne



New



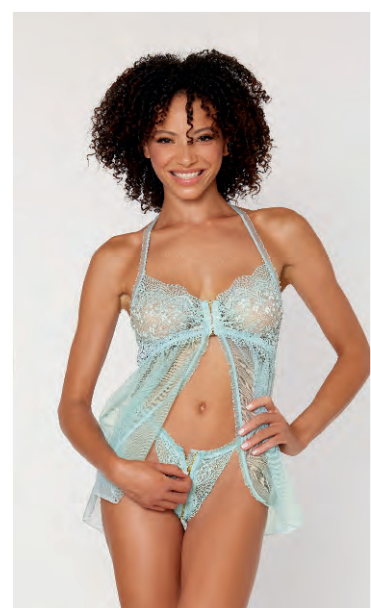
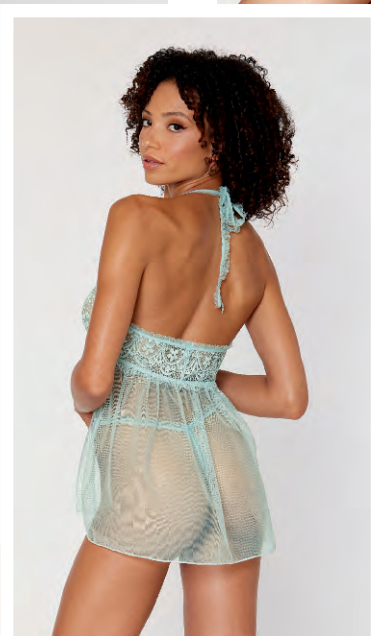
**12807**

O/S  
Mint

- Fishnet and stretch lace teddy with ruffled lace elastic trims
- Wide ribbon lace-up back detail
- Adjustable shoulder straps
- G-string back



*New*



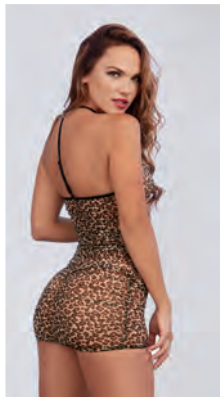
- Stretch lace and mesh babydoll and matching G-string set with ruffled elastic trims
- Scalloped lace cups with front zipper detail and adjustable halter neckline
- Fly-away open front skirt with ruffle detail
- Matching zipper front, lace G-string

**12813, 12813X**

O/S, O/S Queen

Mint





**11842**

O/S  
Animal

- Leopard printed, stretch mesh chemise with shirring details and matching mesh G-string
- Halter neckline with adjustable T-back strap
- Front zipper detail



**12444**

O/S  
Nude/Black

- Flocked cheetah print mesh teddy
- High-neck halter neckline and gold metal zipper with O-ring zipper pull
- Open back with adjustable elastics and G-string back



**12512, 12512X**

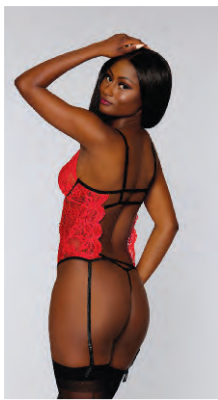
O/S, O/S Queen  
Black

- Zebra patterned off-shoulder knit seamless chemise with long sleeves and thumbholes
- G-string not included





- Scalloped, stretch, galloon lace bustier with matching open-crotch G-string
- Underwire open cups, adjustable shoulder straps, strappy back detail, and attached/adjustable garters
- Shown with style 0007 thigh highs; sold separately



**10561**  
O/S  
Lipstick Red

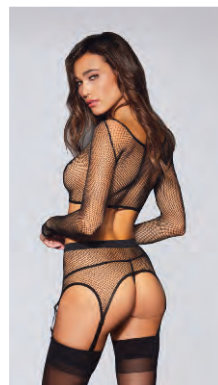


- Stretch lace halter teddy with large heart cut-out back detail
- Plunging neckline and adjustable halter ties

**8694**  
O/S  
Black, Red, White



- 3-piece stretch fishnet crop top, garter belt, and G-string set
- Long sleeve crop top with thumbholes, fishnet garter belt with wide elastic waistband and attached/adjustable garters
- Shown with Style 0007 thigh highs; sold separately



**10562**  
O/S  
Black



- Stretch elastic bralette and garter panty
- Adjustable hook & eye back and back neck closures
- Attached front garters
- Stockings not included

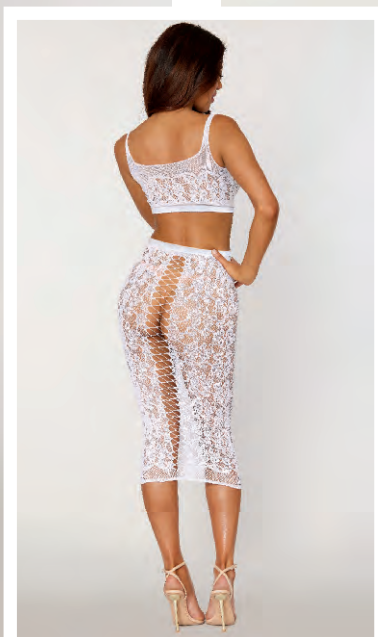
**11833**  
O/S  
Black





STYLE 12921X





- Seamless sheer lace bralette and slip skirt
- Slip skirt with criss-cross back detail
- Gloves and G-string not included

**12921, 12921X**

O/S, O/S Queen  
White



*New*



**12917**

O/S  
White

- Eyelash lace, stretch lace and stretch mesh teddy
- Functional satin ribbon shoulder ties and wide satin back tie
- Soft, shiny stretch waistband





- Lace teddy with front lace-up detail and fully removeable mesh skirt with satin bow
- Adjustable shoulder straps

**12918, 12918X**

O/S, O/S Queen  
White



*New*



**12834, 12834X**

O/S, O/S Queen  
White

- Stretch lace and diamond mesh babydoll and G-string set with ruffled elastic trims
- Criss-cross pearl neckline detail and fly-away open front
- Adjustable shoulder straps
- Matching lace and pearl G-string





- Fishnet halter teddy with stretch lace edge trims
- Low back with gold ring clasp opening and draping pearl trim detail
- Plunging neckline and G-string back

**12832**

O/S  
White



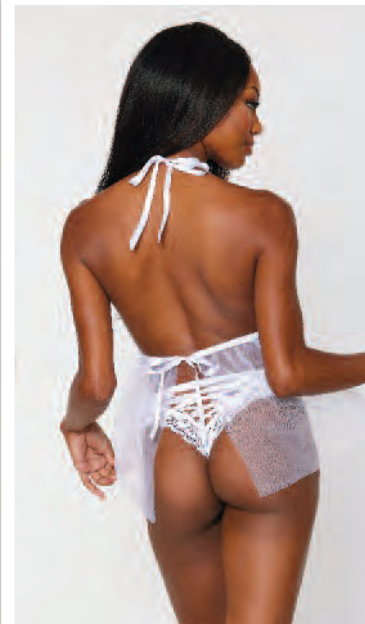
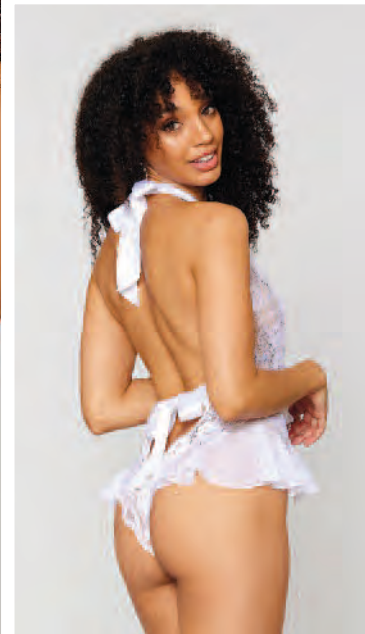


**12508, 12508X**

O/S, O/S Queen  
White

- Stretch lace halter bustier and G-string set with pearl trim details
- Adjustable ribbon waistband with tie back closures
- Attached pearl trim front garters, and adjustable elastic back garters
- Shown with Style 0005/X thigh highs; sold separately





- Stretch, scalloped galloon lace teddy with plunging halter neckline
- Fluttery chiffon ruffles at hip
- Peek-a-boo back and open crotch
- Tie neck closure and satin tie-back bow at waist

**10583**

O/S  
Light Blue, White



- Retro, short stretch lace and mesh halter babydoll with matching lace-up detail panty
- Fly-away back styling, adjustable ties at back neck and back
- Plus panty modified with higher waist and more back coverage

**12190, 12190X**

O/S, O/S Queen  
White



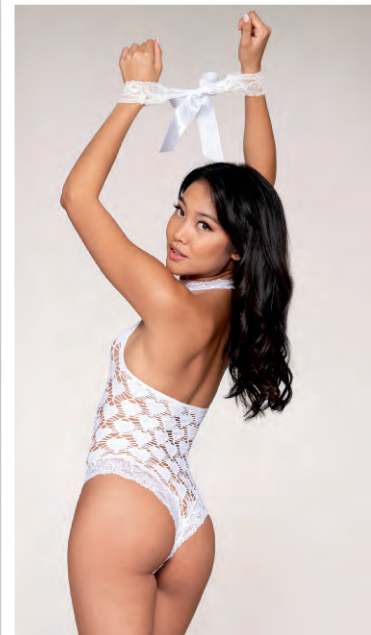


**8694**

O/S  
Black, Red, White



- Stretch lace halter teddy with large heart cut-out back detail
- Plunging neckline and adjustable halter ties



**12234**

O/S  
White



- Heart patterned fence net, seamless teddy with stretch lace edge trim
- Halter neckline with snap neck closure
- Matching lace wrist restraints included





- Stretch lace garter belt with scalloped hem and hook & eye back closure
- Shown with Style 0338 thigh highs; sold separately
- G-string not included

**8735, 8735X**  
O/S, O/S Queen  
Black, Red, White



- Microfiber cheeky panty with rhinestone "Bride" detail
- Organza ruffle trim

**1411**  
S, M, L, XL  
White



- Stretch lace leg garter that functions as a wallet
- 2 secret pockets fit a credit card & a large phone

**10983**  
S/M, M/L  
Black, White/Blue



- Heart stretch lace panty with open crotch and heart cut-out back detail

**1442, 1442X**  
S, M, L, XL, 1X, 2X, 3X  
Black, Red, White





STYLE 12914



- Velvet and lace garter teddy with full lace-up front and fixed garters
- Includes lace bunny-ear headband and attached white faux-fur bunny tail
- Stockings not included

12914

O/S  
"Bunny Vixen"



*New*



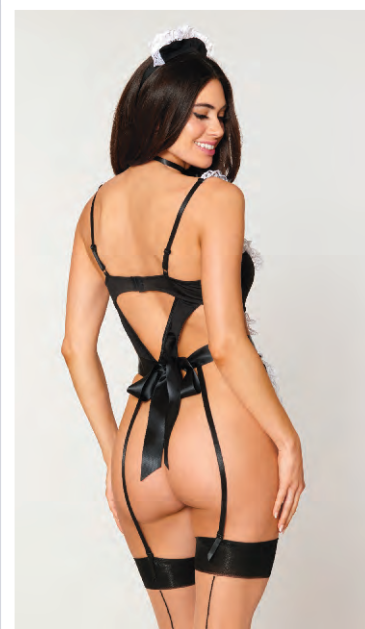
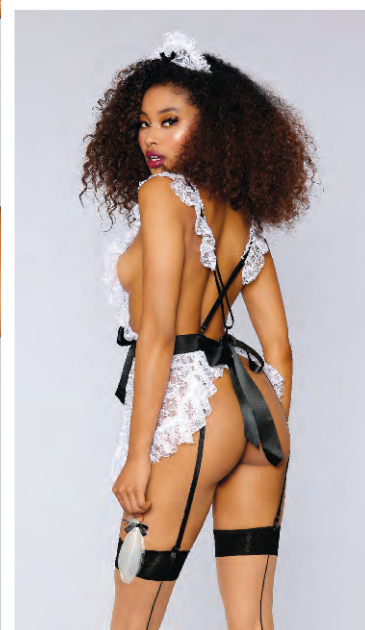
**12826**

O/S

"French Maid Flirt"

- Maid-themed lace teddy with high-cut flutter leg and apron bodice
- White ruffled lace neckline with adjustable criss-cross shoulder straps
- Attached garters at teddy waistline
- Includes separate apron, tie-on maid hat and neck ribbon
- Stockings not included





- Lace maid-themed apron set with ruffle details, attached elastic garters, adjustable criss-cross back straps, and ribbon waist tie
- Matching lace G-string, maid cap, neck ribbon and feather tickler included
- Shown with Style 0338 thigh highs; sold separately

**9766**

O/S

"Maid to Tease"



- Maid-themed stretch knit, underwire teddy set with ruffled lace details and attached/adjustable garters
- Adjustable shoulder straps and open crotch
- Includes maid cap, ribbon neck choker, and apron with "Dirty" embroidery
- Shown with Style 0338 thigh highs; sold separately

**10590**

O/S

"French Maid Fantasy"





**12229, 12229X**

O/S, O/S Queen  
"Maid for you"

- Very sheer mesh maid-themed bedroom costume set with tie-on maid cap and neck ribbon bow
- Soft cup halter bralette with ruffle detail and lace-up accent, matching ruffled mini skirt with apron detail
- Adjustable tie back ribbon closure and front garters
- Shown with Style 0001/X thigh highs; sold separately
- G-string not included





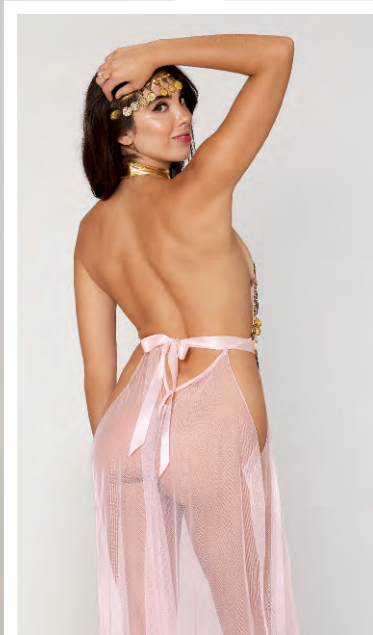
- Four-piece mermaid-themed set with sequin starfish hair clip
- Sparkle mesh bandeau bralette with shell sequin appliqué and delicate draping chains
- Matching mini skirt with asymmetrical hem with shirring details and sequin starfish appliqué
- Matching mesh G-string

**12504**

O/S  
"Mystical Mermaid"



New

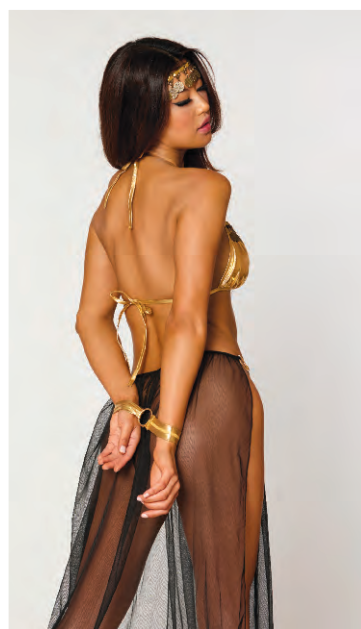


**12825, 12825X**  
O/S, O/S Queen  
"Snake Charmer"

- Belly-dancer themed teddy with attached open-front long skirt and coin trim headdress
- Halter teddy with plunging neckline, gold lamé and coin trim details, gold snake charm belt accent
- Adjustable Velcro neck closure, adjustable elastic waistband, adjustable tie-back belt detail







- Belly-dancer themed bralette and skirt set with matching neck collar chain leash
- Gold lamé halter bra features gold coin trim and adjustable back ties
- Matching thong features attached long mesh skirt with open sides and coin trim detail

**9320**

O/S

"Harem Hottie"



- Belly-dancer themed bralette and skirt set with coin headress and wrist restraints
- Gold lamé halter bralette with coin trim details and tie-back closures
- Matching skirted G-string with ring detail, side slits and coin trim

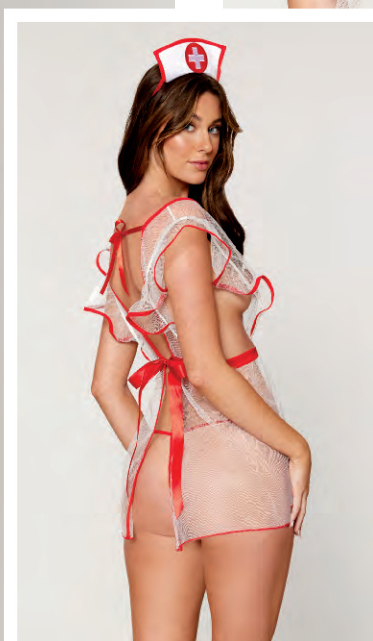
**11859**

O/S

"Gypsy Dancer"



*New*



**12916, 12916X**

O/S, O/S Queen  
"Nurse Me Good"

- Sheer mesh nurse-themed apron with matching G-string, tie-on nurses' cap, and pasties
- Plunging neckline, ribbon tie back closures, and open flutter sleeves





- Nurse-themed stretch mesh chemise with shirt collar detail, short sleeves, and functional front zipper
- Includes tie-on nurse hat and novelty stethoscope
- G-string not included

**11051**

O/S  
"ER Hottie"

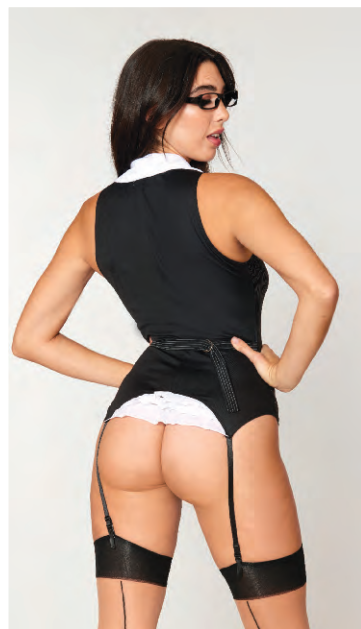


- Nurse-themed bedroom costume with screen-printed nurses' cap
- Strapless bustier-look knit tie-back bralette with nurse patches and contrast details
- Ruffled tie-back mini skirt
- Panty with screen print on back

**12227**

O/S  
"Nurse Ivana Spanking"





**9774**

O/S

"Triage Trixie"



- Nurse-themed stretch jersey and stretch mesh short-sleeved garter slip set with matching G-string and nurses' cap
- Contrast piping, lace-up ribbon front, contrast back ruffles, and attached/adjustable garter straps
- Shown with Style 0338 thigh highs; sold separately

**8014**

O/S

"Working Late"



- Pinstriped, stretch knit vest-style garter slip set with matching thong and plastic glasses
- Attached sheer chiffon shirt collar and lapel, faux double-breasted button detail
- Ruffled back hem and functional back buckle
- Shown with Style 0338 thigh highs; sold separately



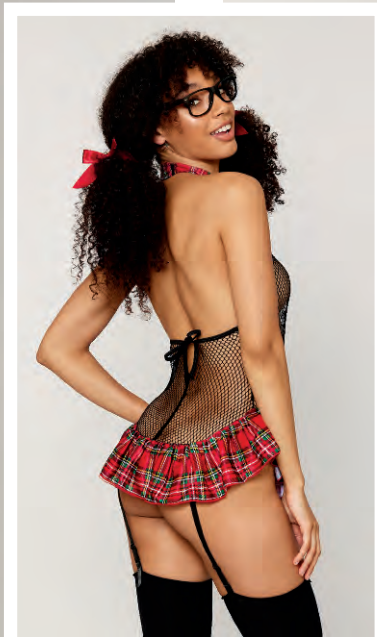
- Stretch mesh police-themed garter slip set with matching G-string and novelty handcuffs
- Faux leather collar, zip front, police badge and ID patch details
- Attached garters
- Stockings not included

**11855, 11855X**

O/S, O/S Queen  
"Lieutenant Lusty"



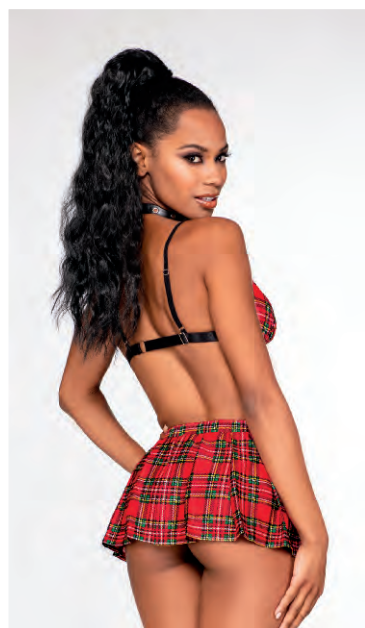
New



**12830, 12830X**  
O/S, O/S Queen  
"Schoolgirl Fantasy"

- Schoolgirl-themed fishnet garter teddy set with novelty plastic glasses
- Halter neck with attached plaid collar & tie with Velcro back closure
- Plunging neckline with tie back closure and skirted plaid detail
- Open crotch, thong back, and attached/adjustable garters
- Hair bows and stockings not included





- Red plaid schoolgirl-themed bedroom costume set with grommet leather trim and buckle details
- Bralette with black lace ruffle, grommet leather trim, faux buckle, and adjustable back straps
- Pleated mini skirt with grommet leather trim waistband with buckle
- Matching choker necklace included
- Stockings not included

**12503**

O/S



“Detention Hall Hottie”



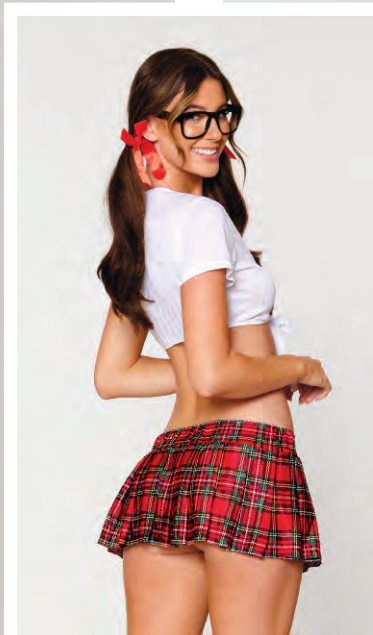
- Goth schoolgirl-themed costume with matching G-string and studded faux leather collar
- Fishnet, tie front bralette with adjustable straps
- Faux-leather pleated mini skirt with stud and ring detail, and adjustable Velcro back closure
- Shown with Style 0365 thigh highs; sold separately

**12453**

O/S



“Goth Schoolgirl”

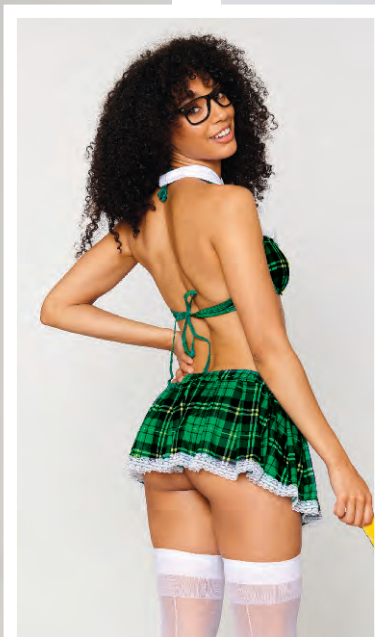


**11046, 11046X**  
O/S, O/S Queen  
"Homeroom Hottie"

- Schoolgirl-themed bedroom costume set with matching hair ribbons and novelty glasses
- Knit crop top features lace neckline detail and tie-front closure
- Pleated mini-skirt features plaid print and side slit detail





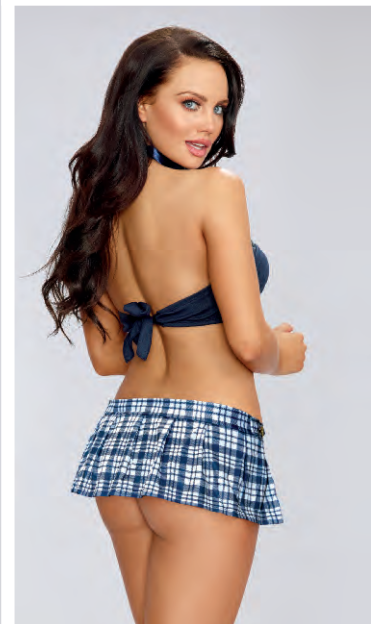


- Green plaid schoolgirl-themed bedroom costume with matching collar with tie, novelty glasses, and ruler paddle with "Enjoy Every Inch" screen-print
- Halter bra with underwire cup support, ruffled lace accent and adjustable tie back closures
- Matching pleated mini skirt with lace hem accent
- Shown with Style 0007/X thigh highs; sold separately

**12228, 12228X**

O/S, O/S Queen  
"Prep School Tease"





**8680**

O/S  
"Teacher's Pet"



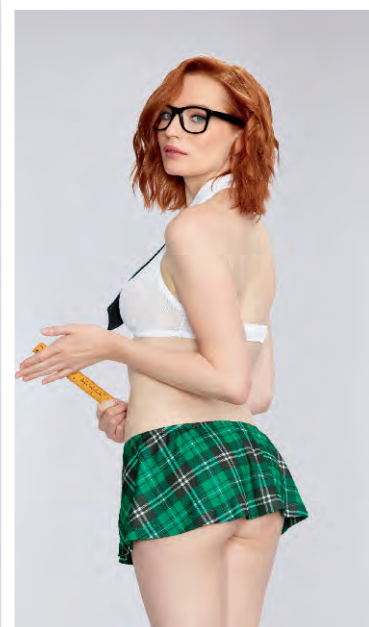
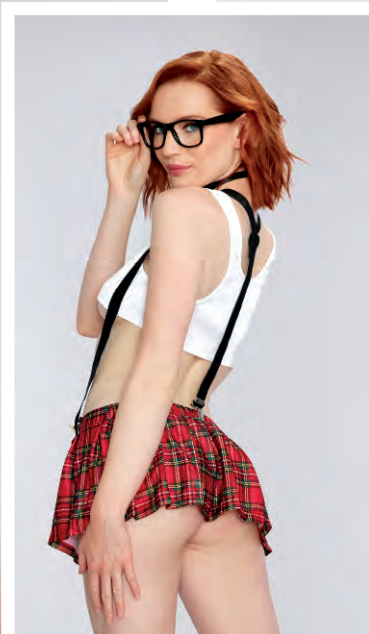
- Blue plaid schoolgirl-themed bedroom costume set with matching thong and necktie
- Strapless vest-look knit top with crest patch, decorative gold buttons and back tie closure
- Pleated plaid skirt with decorative button tab detail

**10602, 10602X**

O/S, O/S Queen  
"Schoolgirl Tease"



- Stretch mesh, schoolgirl-themed chemise with collared halter neckline and novelty glasses
- Attached plaid tie, back Velcro closure
- Attached plaid skirt with slit details



- Schoolgirl-themed bedroom costume set with matching suspenders, thong, plaid bowtie, and plastic glasses
- Stretch knit cropped tank top with "Talk nerdy to me" screen print
- Pleated plaid skirt

**9767**

O/S  
"Nerdy Talk"



- Schoolgirl-themed plaid bedroom costume set with plastic novelty glasses and ruler paddle with "Enjoy Every Inch" screen-print
- Stretch mesh halter crop top with attached collar, tie detail, and Velcro neck closure
- Matching plaid miniskirt with button and slit details

**10168, 10168X**

O/S, O/S Queen  
"Extra-Curricular Cutie"





STYLE 12814



- Stretch faux-leather halter teddy with padlock details
- Halter neck with adjustable hook & eye closure and functional padlock front closure
- Open back with elastic cording lace-up grommet trim
- Matching wrist restraints with padlock detail
- Key included for padlocks

**12814, 12814X**

O/S, O/S Queen  
Black



New



**12818**

O/S  
Black



- Stretch faux-leather, short garter slip with black chain details and matching G-string
- Chain halter neckline with adjustable neck tie closure and adjustable elastic back strap
- Garter shaped hem with front chain garters and elastic back garters
- Black chain collar with Velcro closure, and wrist restraints set included
- Stockings not included



- Stretch faux-leather and fishnet bralette, garter panty and chain restraint set with silver hardware
- Stretch faux-leather bralette with crisscross halter neck and adjustable neck and back closures
- High waisted, open back panty with built-in fishnet garter belt and adjustable garters
- Stockings not included

12912

O/S  
Black



*New*



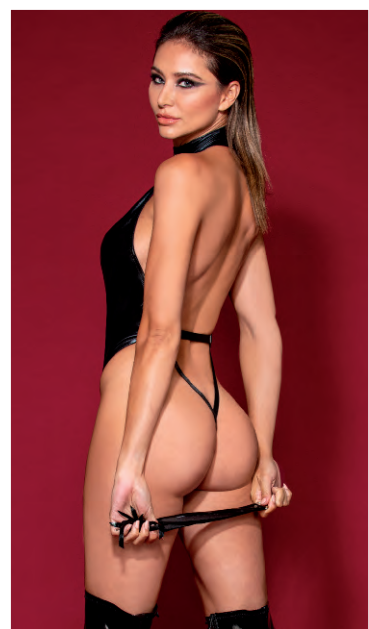
**12911**

O/S  
Black

- Stretch faux-leather and fishnet teddy with functional zipper front, open back, and "V" style back
- Halter neck tie closure and adjustable back straps
- Gold hardware







- Stretch faux-leather halter teddy with studded collar and removeable flogger accessory
- Collar with silver studs and ring details, Velcro back neck closure
- Plunging neckline
- Open back with G-string and adjustable waist elastic

**12450, 12450X**

O/S, O/S Queen  
Black



New



**12820, 12820X**

O/S, O/S Queen  
Black



- Stretch faux-leather garter slip set with gold "Spank Me" hardware details
- Keyhole halter neckline with metal clasp detail and adjustable hook & eye back closure
- Spanking skirt, open back with "Spank Me" hardware detail, and garter-shaped hem with attached/adjustable garters
- Matching wrist restraint with "Spank Me" detail
- G-string and stockings not included



- Strapless stretch faux-leather teddy with lace-up sides and matching collar
- Gold metal grommet trim with adjustable elastic detail that laces up on both sides
- Matching collar with hook & eye closure and matching wrist restraint included

**12493**

O/S  
Black



New

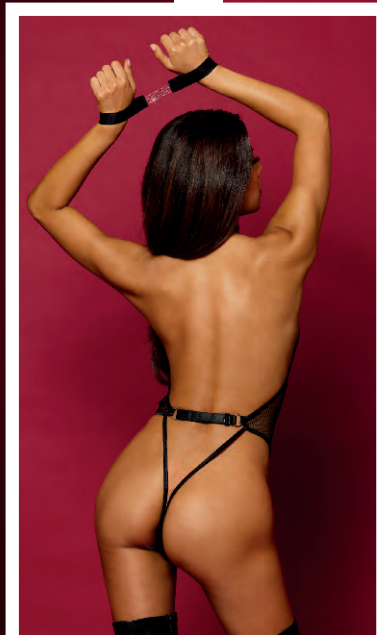


12913

O/S  
Black

- Stretch faux-leather chemise with side lace-up grommet trim and collar with chain wrist restraint
- Stretch faux-leather collar with Velcro closure





- Halter fishnet teddy with ball chain open-front detail and matching wrist restraints
- Studded leather halter neck with adjustable hook & eye back closure
- Adjustable back waist elastic, and "V" string thong back

**12815, 12815X**

O/S, O/S Queen  
Black





**12495, 12495X**

O/S, O/S Queen  
Black

- Large-scale fishnet halter teddy with attached faux-leather waist corset accent
- Attached, large chain front garters
- Open G-string back with adjustable elastics
- Attached collar with chain leash
- Stockings not included





- Fishnet halter teddy with neckline stud details and matching wrist restraints
- Open G-string back with functioning clasp detail
- Includes matching studded wrist restraints with elastic opening and functioning clasp

**10575**

O/S  
Black





**9156**

O/S  
Black



- Faux-leather knit halter chemise set with matching thong, choker, and wrist restraints
- Open cups, adjustable halter neck ties
- Open back with elastic "X" details and silver rings



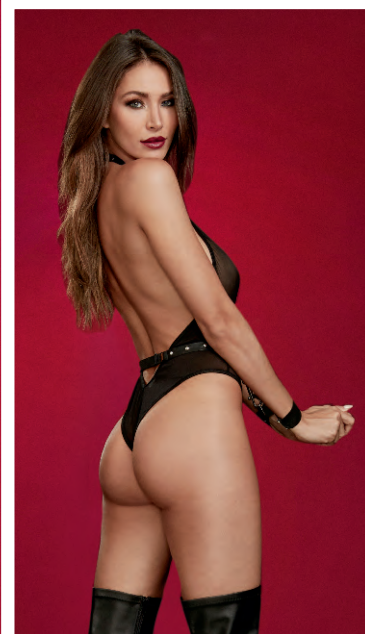
**10559**

O/S  
Black



- Stretch mesh and strappy elastic bustier and G-string set with silver ring and stud details
- Strappy high-neck
- Attached garters
- Strappy elastic back with adjustable hook closures
- Stockings not included





**11853**  
O/S  
Black  
🔹

- Stretch mesh teddy with faux-leather studded trims, silver ring accents, and thong back
- Deep plunging halter neckline with adjustable hook & loop back closure
- Belted-waist detail with adjustable elastic back
- Functioning clasped wrist restraints attach to waist ring



- Stretch fishnet halter garter slip with attached criss-cross elastic harness
- Harness features ring accents, and attached front garters
- Spanking skirt, open back
- G-string and stockings not included

**12499, 12499X**  
O/S, O/S Queen  
Black  
🔹



STYLE 1477

*New*



- High-waisted lace panty with cutout back detail and scalloped lace trim
- Cheeky-fit back

**1477, 1477X**

S, M, L, XL, 1X, 2X, 3X  
Ballet Pink, Black



*New*



- High waisted mesh and lace garter thong with satin ribbon back tie
- Removable/adjustable garters
- Lace side detail
- Shown with Style 0001 thigh highs; sold separately

**1478**

S, M, L, XL  
Black





**1435**

S, M, L, XL

Black, Coral, Slate, Turquoise

• Stretch lace panty with elastic criss-cross details



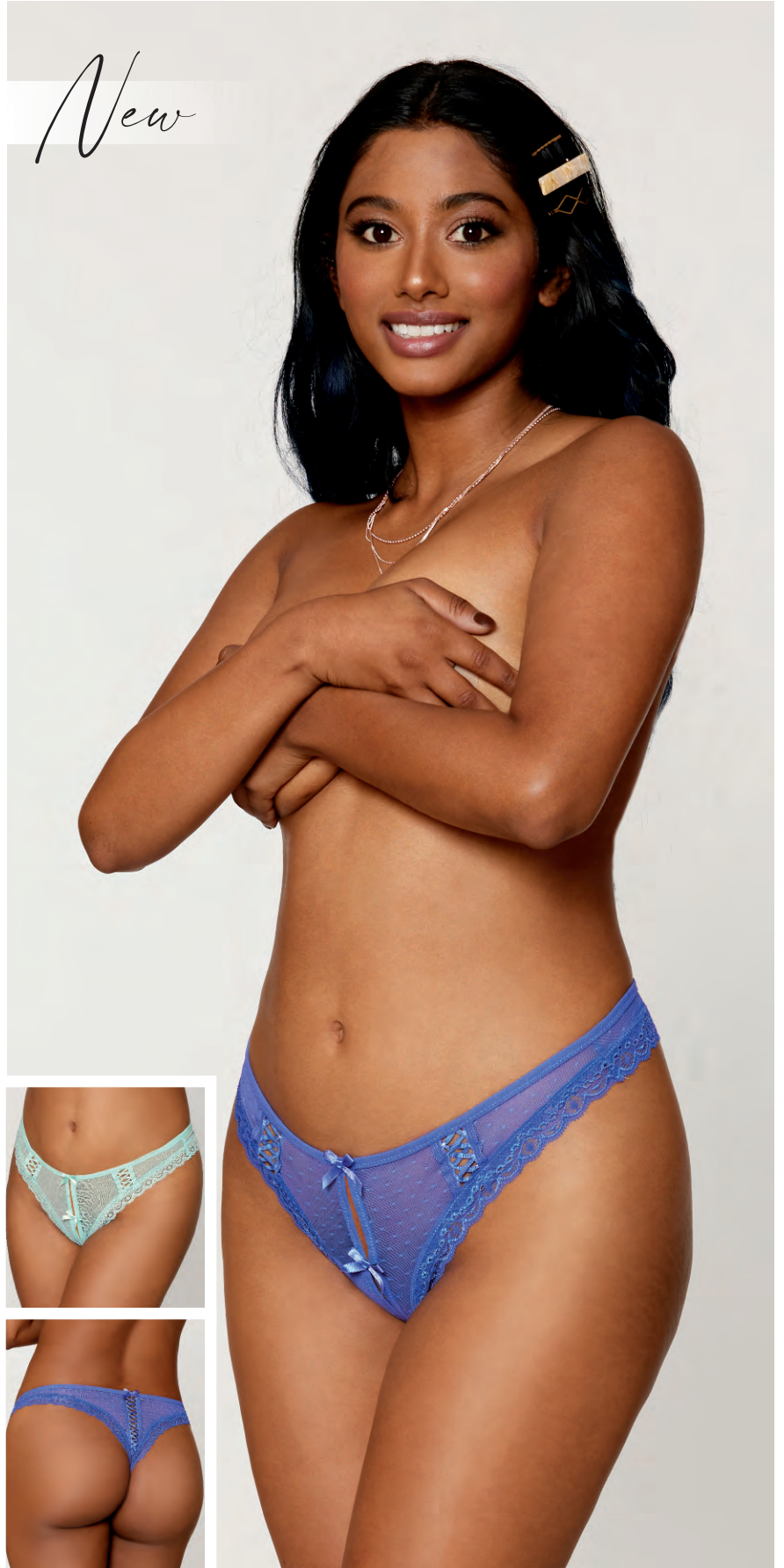
**1376**

O/S  
Black

• Stretch lace thong with stretch lace waistband



*New*



**1480**

S, M, L, XL  
Mint, Periwinkle

• Dot mesh open-crotch thong with stretch lace trim  
• Criss-cross ribbon trim detail and satin bow accents





- Stretch lace cheeky boyshort
- Open crotch
- Satin bow details



**7177, 7177X**  
 S, M, L, 1X/2X, 3X/4X  
 Black, Coral, Hot Pink, Ruby,  
 Sapphire, Turquoise,  
 Vintage Pink, White



- Stretch lace, low-rise panty
- Open crotch
- Ruffled back detail



**1300, 1300X**  
 S, M, L, 1X/2X, 3X/4X  
 Black, Hot Pink, Red



- Stretch lace, cheeky hipster panty
- Scalloped lace trim
- Satin bow



**1375**  
 S, M, L, XL  
 Black, Hot Pink, Red,  
 Turquoise





**1326, 1326X**

S, M, L, 1X/2X, 3X/4X

Black

- Stretch lace, open-crotch boyshort
- Lace-up back detail



**1377**

S, M, L, XL

Hot Pink/Black,  
Red/Black

- Stretch mesh panty
- Lace ruffle trim
- Open-back heart detail



**1468, 1468X**

S, M, L, XL, 1X, 2X, 3X

Black, Red

- Lace tanga open-crotch panty
- Elastic open back detail

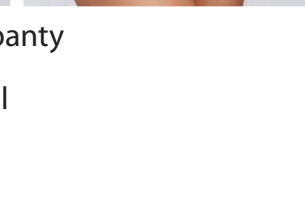
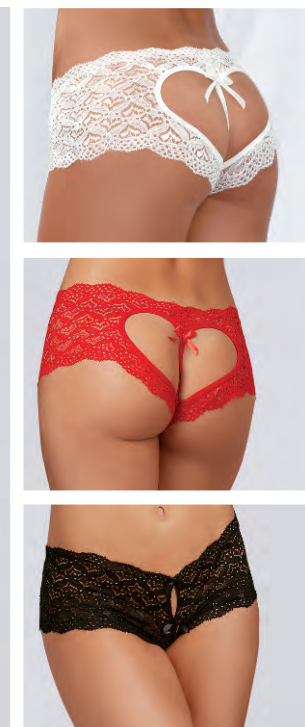


**1442, 1442X**

S, M, L, XL, 1X, 2X, 3X

Black, Red, White

- Heart stretch lace panty
- Open crotch
- Heart cut-out detail





- Stretch lace tanga panty
- Criss-cross strappy waistband detail

**1412**

S/M, M/L  
Black



- Scalloped cross-dye lace and stretch mesh panty
- Strappy elastic back detail

**1424**

S, M, L, XL  
Black



- Microfiber cheeky panty cross-dye lace back
- Satin bow trim

**1380**

S, M, L, XL  
Red/Black



- Microfiber cheeky panty
- Stretch lace trim
- Elastic criss-cross open back detail

**1434, 1434X**

S, M, L, XL, 1X, 2X, 3X  
Black, Hot Pink/Black,  
lirs/Black





**1469**

- Strappy cheeky panty with center front lace detail

S, M, L, XL

Black



**1423**

- Faux-leather, stretch knit cheeky panty
- Functional zipper front
- Stretch mesh back
- Ruching detail

S, M, L, XL

Black



**1465**

- Microfiber open-crotch strappy panty
- Open back with O-ring details

S, M, L, XL

Black



**1449**

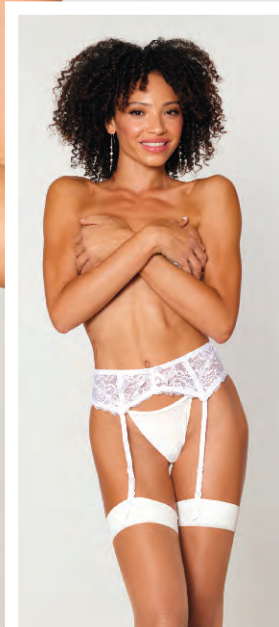
- Fishnet G-string
- Wide elastic waistband

S/M, L/XL

Black







- Stretch lace leg garter that functions as a wallet
- 2 secret pockets
- Pockets can fit a credit card and a large phone

**10983**

S/M, M/L

Black, White/Blue



- Satin-front garter belt
- Zig-zag topstitch detailing
- Stretch mesh back
- Adjustable garter straps
- Hook & eye back closure
- Shown with Style 0006 thigh highs; sold separately
- G-string not included

**9382, 9382X**

O/S, O/S Queen

Black



- Stretch lace garter belt
- Scalloped hem
- Hook & eye back closure
- Shown with Styles 1376 thong and 0338 thigh highs; sold separately
- G-string not included

**8735, 8735X**

O/S, O/S Queen

Red, Black, White



## United States Dreamgirl Sales Representatives

### Gihan Gabor President of Sales

Tel. +1-650-888-6000  
Email: ggabor@dgbrands.com

Tel. +1-323-268-0220  
sales@dgbrands.com  
5548 Lindbergh Lane  
Bell, CA 90201

### Mannfolk Public Relations

www.mannfolkpr.com  
Dorothy Mannfolk  
dorothy@mannfolkpr.com  
Norman Villavicencio  
norman@mannfolkpr.com

**CT, DC, DE, MD, MA, ME,  
NH MI, NJ, NY, OH, PA, RI, VT,**  
Anthony Stefano  
Office +1-201-313-2505  
Cell +1-917-681-8214  
Fax +1-201-313-2506  
Email: AStefano1@verizon.net

**AL, FL, GA, KY, NC, SC, TN, VA, WV**  
Anne Sabo  
Tel. +1-310-430-3544  
Email: asabo@dgbrands.com

**TX, OK, LA, AR, MS**  
Stacey Singleton  
Tel. +1-210-416-1206  
Email: Staceysingleton777@yahoo.com

**AZ, CO, CA, NV, HI, NM, UT**  
Dave George  
Cell: 310.745.9401  
Email: davesellsdg@gmail.com

**WA, OR, ID, MT, AK, WY, ND, SD,  
NE, KS, IA, MO, MN, WI, IL, IN**  
Gloria Reynoso  
Office: 323 268 0220 x274  
Cell: 310 290 9929  
Email: greynoso@dgbrands.com

### Dreamgirl Corporate Headquarters

Customer Service  
US Toll Free Tel. +1-800-622-5686  
US Toll Free Fax +1-800-625-7363  
International Tel. +1-323-268-0220  
International Fax +1-323-268-4913  
Email: customerservice@dgbrands.com  
5548 Lindbergh Lane  
Bell, CA 90201  
www.dreamgirldirect.com



## International Dreamgirl Sales Representatives

### Africa

**Algeria, Bostwana, Ivory Coast, Kenya,  
Libya, Mauritius, Morocco, Nigeria,  
South Africa,  
Sudan, Tunisia, Zimbabwe**  
Canadex International Trading  
Hrant (Harry) Kaprielian  
5255 Henri Bourassa West, Suite: 200  
St Laurent, Quebec, Canada. H4R 2M6  
Tel: +1 (514) 337-0946  
Fax: +1 (514) 337-0857  
Mobile Canada: +1 (514) 578-0946  
Email: hk@canadextrading.com  
www.canadextrading.com

### North America

#### CANADA

Jolar-Speck Inc.  
2154 rue De La Province  
Longueuil, Quebec, Canada J4G 1R7  
Tel: (450) 674-5515 (800)565-6527  
Email: caroline.joanisse@jolarspeck.com  
Website: www.jolarspeck.com  
Contact: Caroline Joanisse

### Oceania

#### Australia

M Distribution Pty Ltd  
PO Box 444  
Mudgeeraba QLD  
Australia 4213  
P: +61 7 5522 1950  
E: Sales@metrointeractive.net.au  
W: http://metrointeractive.net.au/

### Asia

#### Japan

Big Fish Story, Inc.  
#404, 2-22, Jogabori-cho, Nishinomiya, Hyogo,  
662-0856, Japan  
www.bfinfo.com  
www.happycostume.com  
email: bigfish@bfinfo.com  
tel: +81-798-31-7831  
contact: Masashi Shibata

#### Singapore, Indonesia, Malaysia

U4RIA - FEMME FATALE  
220 Orchard Road  
Midpoint Orchard #02-11A  
Singapore 238 852  
M: (+65) 8228 9339 T: (+65) 6738 7198  
W: u4ria.com.sg | femmefatale.com.sg

#### Saudia Arabia, Turkey, Bahrain, Kuwait, Qatar, U.A.E., Palestine, Oman, Jordan, Lebanon, Syria, Israel, Iraq, Iran, Africa, Yemen

Canadex International Trading  
Hrant (Harry) Kaprielian  
5255 Henri Bourassa West, Suite: 200  
St Laurent, Quebec, Canada. H4R 2M6  
Tel: +1 (514) 337-0946  
Fax: +1 (514) 337-0857  
Mobile Canada: +1 (514) 578-0946  
Email: hk@canadextrading.com  
www.canadextrading.com

### Europe

#### Germany, Austria, Czech Rep., Slovenia, Switzerland, Romania, Nether lands, Italy, Poland

Premium Bodywear AG  
Chemnitz Str. 36-38  
09228 Chemnitz/Germany  
dreamgirl@prebo.de  
P +49/37200/860 608  
F +49/37200/860 699  
Contact: Kathleen Richter

#### United Kingdom, Ireland

New Temptations Ltd  
Address: Central House  
2-4 Wellington Grove  
Stockport  
Cheshire  
**UK**  
SK2-6RH  
Email: sales@newtemptations.co.uk  
Tel: +44 (0)161 480 6204  
Website: www.newtemptations.co.uk  
Contact: Faye Simcock

#### Denmark, Sweden, Finland, Norway

Flirt Fashion AB  
Drottninggatan 110  
11360 Stockholm  
Sweden  
info@flirtfashion.se  
ph +468326550  
Contact: Wiggo Berggren

### Europe

#### France, Belgium, Luxembourg, Malta, DOMTOM

CL DIFFUSION,  
1 rue Denis Papin,  
37270 Montlouis sur  
Loire, France.

Tel : 0033 247 52 83 56  
Website : www.commande-sexy.com  
Contact : Margot Herman, CEO

#### Greece, Cyprus

ANACO GROUP – A.ANAGNOSTOU & SIA OE  
a) CENTRAL OFFICES & WAREHOUSE :  
459 STR. KORINTHOU  
PATRAS – GREECE  
Tel: 0030 2610361610, FAX:  
0030328688, Email: anaco@otenet.gr  
b) SHOWROOM & OFFICE :  
6 STR, SEMITELOU  
ATHENS – GREECE  
Tel & fax : 0030 210 7470333  
www.anacogroup.gr  
Contact: Elena Anagnostou

#### All European countries

Shots B.V.  
Veesteeg 12, 6658 KP Beneden-Leeuwen,  
the Netherlands  
maura@shots.nl  
+31 (0) 487 519 333  
Maura Claes  
www.shots.nl

# 2023 Collection Guide

The option to place orders, check inventory & track order status is now at your fingertips . . . log onto [www.DGorders.com](http://www.DGorders.com)!



This symbol represents our hanging styles that will now be shipped in a poly bag. Hangers will be provided free of charge if requested.



This symbol represents Dreamgirl's packaged Lingerie & Bedroom Costume Collection which features front and back views of each style.



This symbol represents Dreamgirl's packaged Hosiery Collection, which features front and back views of each style.



This symbol represents our hanging styles that will now be shipped with a hanger.



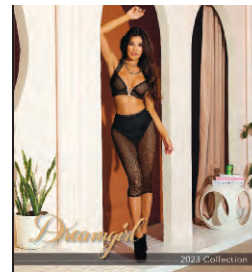
This symbol represents Dreamgirl's packaged Thong and Panty Collection, which features front and back views of each style.



This symbol represents Dreamgirl's stocking collection styles in a sleeve insert with front views in a clear package hook for easy hanging and display.



**Dreamgirl Hanger**  
(For use with styles intended for hanging but shipped without a hanger)  
Item: HGR001



**Dreamgirl 2023**  
Lingerie Collection Catalog  
10" x 11", 25.5cm x 28cm  
176 pages  
Item: 2023-1  
\$10.00

Women's US Size Chart															
SIZE	REGULAR SIZES									PLUS SIZES					
	XS	S	M	L	XL	S/M	M/L	L/XL	O/S	1X/2X	3X/4X	1X	2X	3X	O/S QUEEN
<b>SIZE</b>	0-2	2-6	6-10	10-14	14-16	2-8	8-14	14-16	2-14	16-20	22-24	16-18	20-22	24-26	16-22
<b>CORSET SIZE</b>		32	34	36	38							40	42	44	
<b>CUP</b>	A	A/B	B/C	C/D	D/E	A/B	B/C	C/D	B/C	D/DD	DD	D/DD	DD/DDD	DDD/F	D/DD
<b>BUST</b>	30"-32"	32"-34"	34"-36"	36"-38"	38"-40"	32"-34"	36"-38"	38"-40"	32"-38"	40"-46"	46"-52"	44"-46"	48"-50"	52"-54"	40"-50"
<b>WAIST</b>	23"-25"	25"-27"	27"-29"	29"-31"	31"-33"	25"-27"	28"-32"	31"-33"	24"-31"	36"-42"	42"-46"	38"-40"	42"-44"	46"-48"	36"-44"
<b>HIP</b>	32"-34"	34"-36"	36"-38"	38"-40"	40"-42"	34"-36"	38"-40"	40"-42"	34"-40"	44"-50"	50"-54"	46"-48"	50"-52"	54"-56"	42"-52"
<b>INSEAM</b>	32"	32"	32"	32"	32"	32"	32"	32"	32"	32"	32"	32"	32"	32"	32"
<b>RISE</b>	6 1/2"-7"	7"-7 1/2"	7 1/2"-8"	8"-8 1/2"	8 1/2"-9"	7 1/2"-8"	8"-8 1/2"	8 1/2"-9"	7 1/2"-8"	9"-9 1/2"	10"-10 1/2"	9"-9 1/2"	10"-10 1/2"	11"-11 1/2"	9"-10"
<b>WEIGHT</b>	85 lbs-90 lbs	90 lbs-120 lbs	120 lbs-140 lbs	140 lbs-160 lbs	160 lbs-180 lbs	90 lbs-130 lbs	130 lbs-160 lbs	160 lbs-180 lbs	90 lbs-160 lbs	165 lbs-220 lbs	220 lbs-265 lbs	180 lbs-220 lbs	220 lbs-260 lbs	260 lbs-300 lbs	180 lbs-260 lbs

Women's INTERNATIONAL Size Chart															
SIZE	REGULAR SIZES									PLUS SIZES					
	XS	S	M	L	XL	S/M	M/L	L/XL	O/S	1X/2X	3X/4X	1X	2X	3X	O/S QUEEN
<b>UK</b>	0-2	6-8	10-12	14-16	16-18	6-10	12-16	16-18	6-16	18-22	24-26	18-20	22-24	26-28	18-24
<b>FRANCE/SPAIN</b>	32-34	34-36	38-40	42-44	44-46	34-38	40-44	44-46	33-44	46-50	52-54	46-48	50-52	54-56	46-52
<b>GERMANY</b>	30-32	32-34	36-38	40-42	42-44	32-36	38-42	42-44	32-42	44-48	50-52	44-46	48-50	52-54	44-50
<b>ITALY</b>	34-36	38-40	42-44	46-48	48-50	38-42	44-48	48-50	38-48	50-54	56-58	50-52	54-56	58-60	50-56
<b>JAPAN</b>	5	7-9	11-13	15-17	19-21	7-13	13-17	19-21	7-17	21-25	25-29	21-23	25-27	29-31	21-25
<b>CUP</b>	A	A/B	B-C	C/D	D/E	A/B	B/C	C/D	B/C	D/DD	DD	D/DD	DD/DDD	DDD/F	D/DD
<b>US CORSET SIZE</b>		32	34	36	38							40	42	44	
<b>BUST</b>	76cm-81cm	81cm-86cm	86cm-91cm	91cm-97cm	97cm-102cm	81cm-86cm	91cm-97cm	97cm-102cm	81cm-97cm	102cm-117cm	117cm-132cm	112 cm -117 cm	122 cm -127 cm	132 cm-137 cm	112 cm- 127 cm
<b>WAIST</b>	54cm-64cm	64cm-69cm	69cm-74cm	74cm-79cm	79cm-84cm	61cm-66cm	71cm-81cm	79cm-84cm	61cm-86cm	91cm-107cm	107cm-117cm	96.5 cm -101.5 cm	107 cm -112 cm	117 cm -122 cm	91cm-112cm
<b>HIP</b>	81cm-86cm	86cm-91cm	91cm-97cm	97cm-102cm	101cm-107cm	86cm-91cm	97cm-102cm	101cm-107cm	91cm-102cm	112cm-127cm	127cm-137cm	117 cm -122 cm	127 cm -132 cm	137 cm -142.5 cm	107cm-135cm
<b>INSEAM</b>	81cm	81cm	81cm	81cm	81cm	81cm	81cm	81cm	81cm	81cm	81cm	81cm	81cm	81cm	81cm
<b>RISE</b>	16cm-18cm	18cm-19cm	19cm-20cm	20cm-22cm	22cm-23cm	19cm-20cm	20cm-22cm	22cm-23cm	19cm-20cm	23cm-24cm	25cm-27cm	23 cm - 24cm	25.5 cm - 26.5 cm	28 cm -29 cm	23cm-25cm
<b>WEIGHT</b>	39kg-41kg	41kg-54kg	54kg-64kg	64kg-73kg	73kg-85kg	41kg-59kg	59kg-73kg	73kg-85kg	41kg-73kg	75kg-100kg	100kg-120kg	81kg- 100kg	100kg- 118kg	118kg- 136kg	82kg-118kg

**To Place an Order:** Call, Fax or E-mail your sales representative, or call our Corporate Headquarters TOLL FREE 1-800-622-5686, or fax TOLL FREE 1-800-625-7363 M-F 8:00 A.M. - 4:30 P.M. P.S.T. Or, order online at [DGorders.com](http://DGorders.com).

**CA Resale Number:** You must have a valid resale number (for California), or appropriate business license (for all other states), before we can process your order. Fax a copy of your resale license (for California), we will send you a resale card to fill out, then return to us as soon as possible.

**Minimum Order:** Minimum order for new accounts is \$1,000. For existing accounts, the minimum order submitted via phone, fax or email is \$300, and the minimum order submitted via [www.DGorders.com](http://www.DGorders.com) is \$100. Prices subject to change.

**Web Images Authorization:** Please contact our Corporate headquarters for use and authorization of Dreamgirl images to use for your website. Dreamgirl Images can only be used when authorization is given. The use of Dreamgirl images in your own catalog or in media advertising must be

as a selling tool in conjunction with offering the style pictured for sale. Dreamgirl **does not** permit use of our images to promote other business or adult sites. Images are to be used for the purpose of selling our merchandise only.

**Pricing Policy:** Dreamgirl strongly recommends that you do not price any CURRENT Dreamgirl merchandise on the Internet below Dreamgirl's wholesale price times at least a markup of 2.0. See DG Brands US MAP & Authorized Reseller Policy for complete guidelines.

**Payments:** Initial orders will be shipped COD (cashiers check or money order), or you may use your credit card or wire transfer funds. We accept Visa, MasterCard, Discover and American Express. All COD customers will receive one phone call stating the amount of the order, shipping date and terms of payment (cashiers check, certified check, or money order).

**Credit Terms:** Ask for a Credit Application and allow 10 - 15 days to process for open terms or company check approval.

**Shipping:** Shipping is by UPS or FedEx Ground, all orders are shipped F.O.B. Corporate Headquarters. Changes or cancellations to orders after they are packed and ready to ship result in a 20% restocking charge. All addresses will be validated and no orders shall be shipped to PO Boxes or Mailing Centers (UPS/FedEx Stores), etc.

**Backorders:** Any item not shipped complete on an order is automatically left open as a backorder unless advised in writing to cancel backordered items.

**Returned Checks and Shipments:** There is a \$20.00 service charge for all returned checks. All bounce backs will be given a 10-day grace period from the time the order is received in our warehouse. If we receive no response within 10 days, you will incur a 20% restocking fee plus freight charges. This charge will be added to your new order. If we receive more than 3 bounce backs within a 6-month period your account will be put on a pre-paid basis. All refused shipments will result in a 20% restocking charge, and all future orders will be held until payment is made.

**Claims, Returns, Authorization, Inquiries and Shipping Errors:** Any discrepancy in the quantity of cartons received from carrier must be reported within 5 days of receipt of goods. Any discrepancy in product quantities received, damaged or incorrect merchandise must be reported within 10 days upon receipt of goods. However, HALLOWEEN COSTUME shipments made January through June will be allowed until July 1st to report. By reporting earlier, the ability to replace from stock is increased. All returns must be requested within 10 days of receipt of your order and require a Return Authorization. Returns will not be accepted for in-store damages, or for garments which have been worn. Returns will be repaired or replaced. Corporate provided RA# number must be clearly written on the outside of the box, or the box will be refused at the Receiving Warehouse. Returns are subject to a 20% restocking charge. We will exchange returned merchandise or issue a Credit Memo for the dollar amount within 30 days. WE DO NOT GIVE CASH REFUNDS.

# 2023 Collection Guide

The option to place orders, check inventory & track order status is now at your fingertips... log onto [www.DGorders.com](http://www.DGorders.com)!

Flat Pack	Style	Colors	Size	Page
	1300	Black, Hot Pink, Red	S, M, L	165
	1300X	Black, Hot Pink, Red	1X/2X, 3X/4X	165
	1326	Black	S, M, L	166
	1326X	Black	1X/2X, 3X/4X	166
	1375	Black, Hot Pink, Red, Turquoise	S, M, L, XL	165
	1376	Black	O/S	164
	1377	Hot Pink/Black, Red/Black	S, M, L, XL	166
	1380	Red/Black	S, M, L, XL	167
	1411	White	S, M, L, XL	129
	1412	Black	S/M, M/L	167
	1423	Black	S, M, L, XL	168
	1424	Black	S, M, L, XL	167
	1434	Black, Hot Pink/Black, Iris/Black	S, M, L, XL	167
	1434X	Black, Hot Pink/Black, Iris/Black	1X, 2X, 3X	167
	1435	Black, Coral, Slate, Turquoise	S, M, L, XL	164
	1442	Black, Red, White	S, M, L, XL	129,166
	1442X	Black, Red, White	1X, 2X, 3X	129,166
	1449	Black	S/M, L/XL	168
	1465	Black	S, M, L, XL	168
	1468	Black, Red	S, M, L, XL	166
	1468X	Black, Red	1X, 2X, 3X	166
	1469	Black	S, M, L, XL	168
	<b>1477</b>	<b>Ballet Pink, Black</b>	S, M, L, XL	163
	<b>1477X</b>	<b>Ballet Pink, Black</b>	1X, 2X, 3X	163
	<b>1478</b>	<b>Black</b>	S, M, L, XL	163
	<b>1480</b>	<b>Mint, Periwinkle</b>	S, M, L, XL	164
	3717	Black, Red	S, M, L	65
	3717X	Black, Red	1X/2X, 3X/4X	65
	7177	Black, Coral, Hot Pink, Ruby, Sapphire	S, M, L	165
	7177	Turquoise, Vintage Pink, White	S, M, L	165
	7177X	Black, Coral, Hot Pink, Ruby, Sapphire	1X/2X, 3X/4X	165
	7177X	Turquoise, Vintage Pink, White	1X/2X, 3X/4X	165
	8014	"Working Late"	O/S	140
*	8603	Garnet	S, M, L, XL	43
	8680	"Teacher's Pet"	O/S	146
	8694	Black, Red, White	O/S	119,128
	8735	Black, Red, White	O/S	129,169
	8735X	Black, Red, White	O/S Queen	129,169
	9156	Black	O/S	160
	9320	"Harem Hottie"	O/S	137
	9382	Black	O/S	169
	9382X	Black	O/S Queen	169
*	9384	Black	32, 34, 36, 38	93
*	9385	Black	32, 34, 36, 38	93
*	9386	Black, Red, White	32, 34, 36, 38	92
*	9386X	Black, Red, White	40, 42, 44	92
	9766	"Maid To Tease"	O/S	133
	9767	"Nerdy Talk"	O/S	147
	9774	"Triage Trixie"	O/S	140
*	10102	Midnight, Mulberry	S, M, L, XL	42

Flat Pack	Style	Colors	Size	Page
*	10102X	Mulberry	1X, 2X, 3X	42
	10168	"Extra-Curricular Cutie"	O/S	147
	10168X	"Extra-Curricular Cutie"	O/S Queen	147
*	10460	Garnet	S, M, L, XL	62
*	10460X	Garnet	1X, 2X, 3X	62
*	10532	Sky Blue	S, M, L, XL	18
	10551	Garnet, Mulberry	O/S	103
	10559	Black	O/S	160
	10561	Lipstick Red	O/S	119
	10562	Black	O/S	119
	10575	Black	O/S	159
	10583	Light Blue, White	O/S	115,127
	10590	"French Maid Fantasy"	O/S	133
	10602	"Schoolgirl Tease"	O/S	146
	10602X	"Schoolgirl Tease"	O/S Queen	146
	10983	Black, White/Blue	S/M, M/L	129,169
*	10996	Black, Rouge, Vintage Rose	S, M, L, XL	64
*	10996X	Black, Rouge, Vintage Rose	1X, 2X, 3X	64
*	11020	Plum, Ruby	S, M, L, XL	61
*	11020X	Plum, Ruby	1X, 2X, 3X	61
*	11025	Black, Lipstick Red	XS, S, M, L, XL	60
	11046	"Homeroom Hottie"	O/S	144
	11046X	"Homeroom Hottie"	O/S Queen	144
	11051	"ER Hottie"	O/S	139
	11503	Garnet	O/S	108
	11503X	Garnet	O/S Queen	108
	11513	Pink Champagne	O/S	115
	11513X	Pink Champagne	O/S Queen	115
	11517	Plum	O/S	102
	11517X	Plum	O/S Queen	102
	11776	Garnet, Rose Pink	O/S	109,114
	11776X	Garnet, Rose Pink	O/S Queen	109,114
*	11815	Eggplant	S, M, L, XL	24
	11833	Black	O/S	119
	11842	Animal	O/S	118
	11853	Black	O/S	161
	11855	"Lieutenant Lusty"	O/S	141
	11855X	"Lieutenant Lusty"	O/S Queen	141
	11859	"Gypsy Dancer"	O/S	137
	12125	Nocturnal	O/S	104
*	12159	Black	S, M, L, XL	57
*	12160	Black	S, M, L, XL	57
*	12163	Black	S, M, L, XL	59
*	12163X	Black	1X, 2X, 3X	59
*	12174	Black	S, M, L, XL	54
*	12186	White	S, M, L, XL	90
*	12186X	White	1X, 2X, 3X	90
*	12189	White	S, M, L, XL	91
*	12189X	White	1X, 2X, 3X	91
	12190	White	O/S	127

Styles in **BOLD** are New Styles. Prices subject to change. Actual packaging graphics on some styles may vary.

\*These are styles intended for hanging but are shipped without a hanger. Add complimentary hangers to your order at the time of purchase by selecting Style HGR001 along with the quantity needed.

# 2023 Collection Guide

The option to place orders, check inventory & track order status is now at your fingertips... log onto [www.DGorders.com](http://www.DGorders.com)!

Flat Pack	Style	Colors	Size	Page
	12190X	White	O/S Queen	127
	12227	"Nurse Ivana Spanking"	O/S	139
	12228	"Prep School Tease"	O/S	145
	12228X	"Prep School Tease"	O/S Queen	145
	12229	"Maid For You"	O/S	134
	12229X	"Maid For You"	O/S Queen	134
	12234	White	O/S	128
*	12239	Black, Plum, Rouge	S, M, L, XL	71
*	12239X	Black, Plum, Rouge	1X, 2X, 3X	71
*	12243	Black	S, M, L, XL	60
*	12378	Eggplant, Garnet	S, M, L, XL	63
*	12378X	Eggplant, Garnet	1X, 2X, 3X	63
*	12386	Pink Champagne	S, M, L, XL	18
*	12422	Black	S, M, L, XL	35
*	12422X	Black	1X, 2X, 3X	35
*	12424	Black	S, M, L, XL	56
*	12424X	Black	1X, 2X, 3X	56
*	12425	Black	S, M, L, XL	55
*	12425X	Black	1X, 2X, 3X	55
*	12426	Nocturnal	S, M, L, XL	40
*	12426X	Nocturnal	1X, 2X, 3X	40
*	12428	Eggplant	S, M, L, XL	35
*	12430	Nocturnal	S, M, L, XL	41
*	12431	Nocturnal	S, M, L, XL	41
*	12432	Rose Pink	S, M, L, XL	19
*	12435	Rose Pink	S, M, L, XL	19
*	12436	White	S, M, L, XL	89
*	12436X	White	1X, 2X, 3X	89
*	12437	White	S, M, L, XL	88
*	12437X	White	1X, 2X, 3X	88
	12444	Nude/Black	O/S	118
	12446	Mulberry	O/S	103
	12446X	Mulberry	O/S Queen	103
	12447	Black	O/S	99
	12447X	Black	O/S Queen	99
	12450	Black	O/S	153
	12450X	Black	O/S Queen	153
	12453	"Goth Schoolgirl"	O/S	143
*	12456	Black	S, M, L, XL	54
*	12462	Black	S, M, L, XL	31
*	12462X	Black	1X, 2X, 3X	31
*	12467	Plum	S, M, L, XL	25
*	12467X	Plum	1X, 2X, 3X	25
*	12468	Plum	S, M, L, XL	24
*	12479	White	S, M, L, XL	89
*	12480	Nocturnal	S, M, L, XL	77
*	12482	Eggplant	S, M, L, XL	77
	12483	Rose Pink	O/S	114
	12485	Plum	O/S	102
	12488	Garnet	O/S	108

Flat Pack	Style	Colors	Size	Page
	12488X	Garnet	O/S Queen	108
	12493	Black	O/S	155
	12495	Black	O/S	158
	12495X	Black	O/S Queen	158
	12499	Black	O/S	161
	12499X	Black	O/S Queen	161
	12503	"Detention Hall Hottie"	O/S	143
	12504	"Mystical Mermaid"	O/S	135
	12508	White	O/S	126
	12508X	White	O/S Queen	126
	12512	Black	O/S	118
	12512X	Black	O/S Queen	118
*	12651	Black	S, M, L, XL	58
*	<b>12652</b>	<b>Black</b>	S, M, L, XL	70
*	<b>12652X</b>	<b>Black</b>	1X, 2X, 3X	70
*	12693	Burgundy	S, M, L, XL	43
*	<b>12761</b>	<b>Black</b>	S, M, L, XL	51
*	<b>12761X</b>	<b>Black</b>	1X, 2X, 3X	51
*	<b>12762</b>	<b>Nocturnal</b>	S, M, L, XL	37
*	<b>12763</b>	<b>Nocturnal</b>	S, M, L, XL	38
*	<b>12763X</b>	<b>Nocturnal</b>	1X, 2X, 3X	38
*	<b>12764</b>	<b>Black</b>	S, M, L, XL	28
*	<b>12765</b>	<b>Black</b>	S, M, L, XL	29
*	<b>12768</b>	<b>Burgundy</b>	S, M, L, XL	44
*	<b>12769</b>	<b>Burgundy</b>	S, M, L, XL	45
*	<b>12769X</b>	<b>Burgundy</b>	1X, 2X, 3X	45
*	<b>12770</b>	<b>Black</b>	S, M, L, XL	27
*	<b>12770X</b>	<b>Black</b>	1X, 2X, 3X	27
*	<b>12771</b>	<b>Aubergine/Black</b>	S, M, L, XL	23
*	<b>12771X</b>	<b>Aubergine/Black</b>	1X, 2X, 3X	23
*	<b>12774</b>	<b>Burgundy</b>	S, M, L, XL	46
*	<b>12775</b>	<b>Aubergine</b>	S, M, L, XL	21
*	<b>12775X</b>	<b>Aubergine</b>	1X, 2X, 3X	21
*	<b>12776</b>	<b>Aubergine</b>	S, M, L, XL	22
*	<b>12781</b>	<b>Mint</b>	S, M, L, XL	10
*	<b>12782</b>	<b>Mint</b>	S, M, L, XL	9
*	<b>12783</b>	<b>Pink/Black</b>	S, M, L, XL	6
*	<b>12783X</b>	<b>Pink/Black</b>	1X, 2X, 3X	6
*	<b>12784</b>	<b>Pink/Black</b>	S, M, L, XL	7
*	<b>12785</b>	<b>Nocturnal</b>	S, M, L, XL	39
*	<b>12787</b>	<b>Burgundy</b>	S, M, L, XL	69
*	<b>12787X</b>	<b>Burgundy</b>	1X, 2X, 3X	69
*	<b>12788</b>	<b>Burgundy</b>	S, M, L, XL	68
*	<b>12788X</b>	<b>Burgundy</b>	1X, 2X, 3X	68
*	<b>12789</b>	<b>Nocturnal</b>	S, M, L, XL	67
*	<b>12790</b>	<b>Burgundy</b>	S, M, L, XL	78
*	<b>12790X</b>	<b>Burgundy</b>	1X, 2X, 3X	78
*	<b>12791</b>	<b>Burgundy</b>	S, M, L, XL	79
*	<b>12792</b>	<b>Periwinkle</b>	S, M, L, XL	75
*	<b>12793</b>	<b>Mint</b>	S, M, L, XL	73

Styles in BOLD are New Styles. Prices subject to change. Actual packaging graphics on some styles may vary.

\*These are styles intended for hanging but are shipped without a hanger. Add complimentary hangers to your order at the time of purchase by selecting Style HGR001 along with the quantity needed.

# 2023 Collection Guide

The option to place orders, check inventory & track order status is now at your fingertips... log onto [www.DGorders.com](http://www.DGorders.com)!

Flat Pack	Style	Colors	Size	Page
Flat Pack	Style	Colors	Size	Page
*	12798	Nocturnal/Black	S, M, L, XL	76
*	12798X	Nocturnal/Black	1X, 2X, 3X	76
*	12799	White	S, M, L, XL	83
*	12802	White	S, M, L, XL	86
*	12803	White	S, M, L, XL	87
*	12803X	White	1X, 2X, 3X	87
	12804	Black	O/S	97
	12804X	Black	O/S Queen	97
	12805	Black	O/S	98
	12806	Black	O/S	96
	12806X	Black	O/S Queen	96
	12807	Mint	O/S	116
	12808	Aubergine	O/S	100
	12809	Burgundy	O/S	106
	12809X	Burgundy	O/S Queen	106
	12811	Black	O/S	95
	12813	Mint	O/S	117
	12813X	Mint	O/S Queen	117
	12814	Black	O/S	149
	12814X	Black	O/S Queen	149
	12815	Black	O/S	157
	12815X	Black	O/S Queen	157
	12818	Black	O/S	150
	12820	Black	O/S	154
	12820X	Black	O/S Queen	154
	12825	"Snake Charmer"	O/S	136
	12825X	"Snake Charmer"	O/S Queen	136
	12826	"French Maid Flirt"	O/S	132
	12830	"Schoolgirl Fantasy"	O/S	142
	12830X	"Schoolgirl Fantasy"	O/S Queen	142
	12832	White	O/S	125
	12834	White	O/S	124
	12834X	White	O/S Queen	124
*	12882	Black	S, M, L, XL	53
*	12882X	Black	1X, 2X, 3X	53
*	12883	Black	S, M, L, XL	52
*	12886	Black	S, M, L, XL	30
*	12887	Black	S, M, L, XL	49
*	12887X	Black	1X, 2X, 3X	49
*	12889	Black/Animal	S, M, L, XL	34
*	12889X	Black/Animal	1X, 2X, 3X	34
*	12890	Black/Animal	S, M, L, XL	33
*	12895	Periwinkle	S, M, L, XL	15
*	12895X	Periwinkle	1X, 2X, 3X	15
*	12896	Periwinkle	S, M, L, XL	16
*	12897	Mint	S, M, L, XL	13
*	12897X	Mint	1X, 2X, 3X	13
*	12898	Black/Pink	S, M, L, XL	5
*	12899	Black/Pink	S, M, L, XL	4
*	12899X	Black/Pink	1X, 2X, 3X	4

Flat Pack	Style	Colors	Size	Page
Flat Pack	Style	Colors	Size	Page
*	12901	Mint	S, M, L, XL	11
*	12902	Periwinkle	S, M, L, XL	17
*	12904	White	S, M, L, XL	81
*	12904X	White	1X, 2X, 3X	81
*	12906	White	S, M, L, XL	82
*	12907	White	S, M, L, XL	84
*	12907X	White	1X, 2X, 3X	84
*	12909	White	S, M, L, XL	85
*	12909X	White	1X, 2X, 3X	85
	12910	Nocturnal	O/S	104
	12911	Black	O/S	152
	12912	Black	O/S	151
	12913	Black	O/S	156
	12914	"Bunny Vixen"	O/S	131
	12916	"Nurse Me Good"	O/S	138
	12916X	"Nurse Me Good"	O/S Queen	138
	12917	White	O/S	122
	12918	White	O/S	123
	12918X	White	O/S Queen	123
	12921	White	O/S	121
	12921X	White	O/S Queen	121
	12922	Nocturnal	O/S	105
	12922X	Nocturnal	O/S Queen	105
	12923	Aubergine	O/S	101
	12923X	Aubergine	O/S Queen	101
	12924	Ballet Pink	O/S	113
	12926	Burgundy	O/S	107
	12927	Periwinkle	O/S	110
	12928	Periwinkle	O/S	111
	12957	Periwinkle	O/S	112
	12957X	Periwinkle	O/S Queen	112
*	12962	Periwinkle	S, M, L, XL	74
*	12962X	Periwinkle	1X, 2X, 3X	74
*	12963	Burgundy/Black	S, M, L, XL	47

Styles in **BOLD** are New Styles. Prices subject to change. Actual packaging graphics on some styles may vary.

\*These are styles intended for hanging but are shipped without a hanger. Add complimentary hangers to your order at the time of purchase by selecting Style HGR001 along with the quantity needed.



STYLES 12897 and 12762



*Dreamgirl*

The images and graphics in this catalogue [or CD] are the copyright-protected work of Dreamgirl Brands. Any use or reproduction without the express written consent of Dreamgirl Brands is strictly prohibited. Violators will be prosecuted to the fullest extent of the law.

COPYRIGHT © MMXXIII



**SPINE WILL NEED TO BE ADJUSTED**  
**per thickness of book. I have built a**  
**bunch of bleed area so this can be**  
**placed in a window accordingly.**  
*The black is 4 color process.*

*Stamgill*

2023 Collection